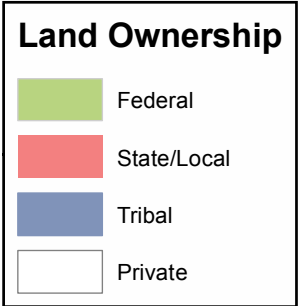
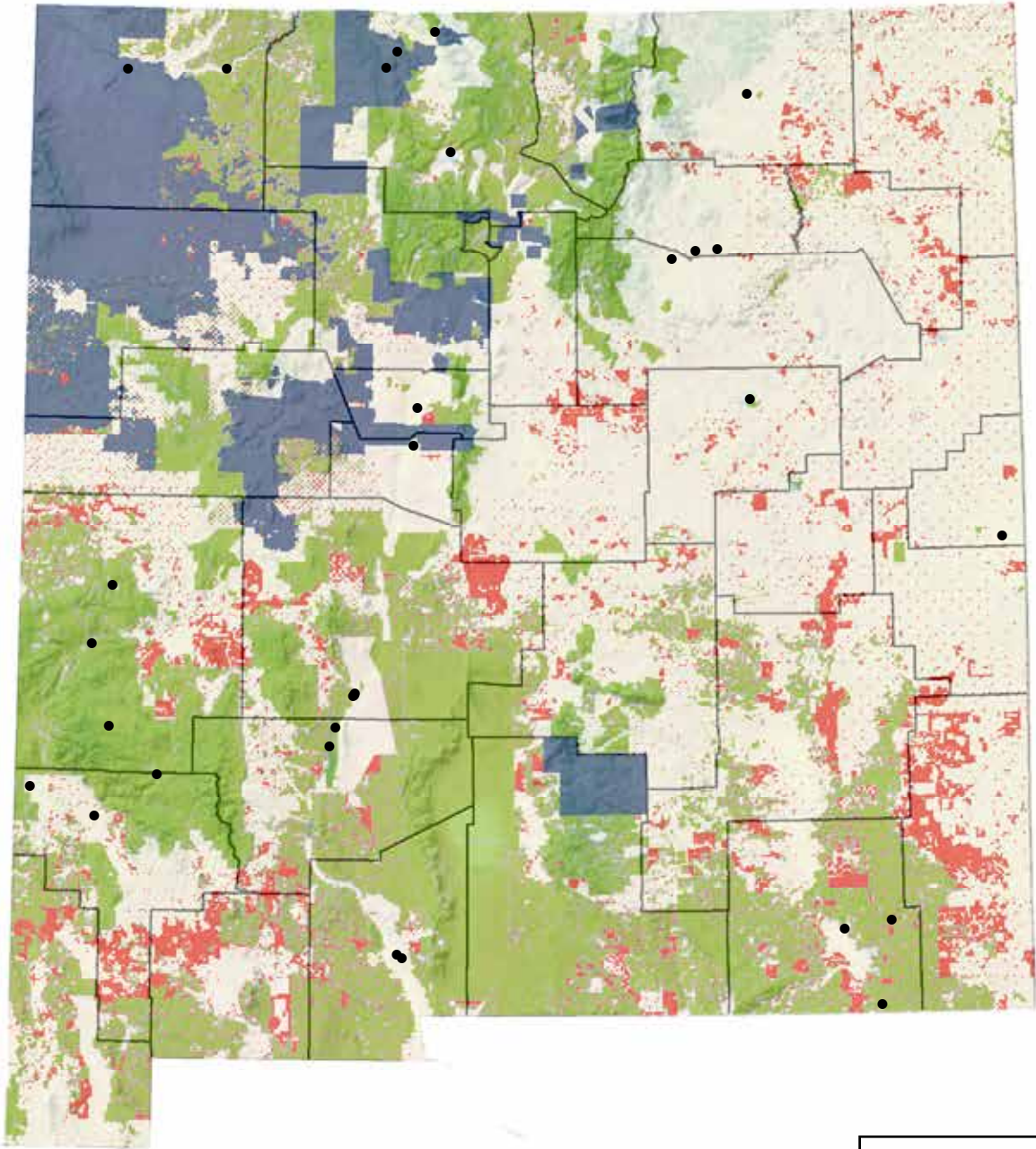
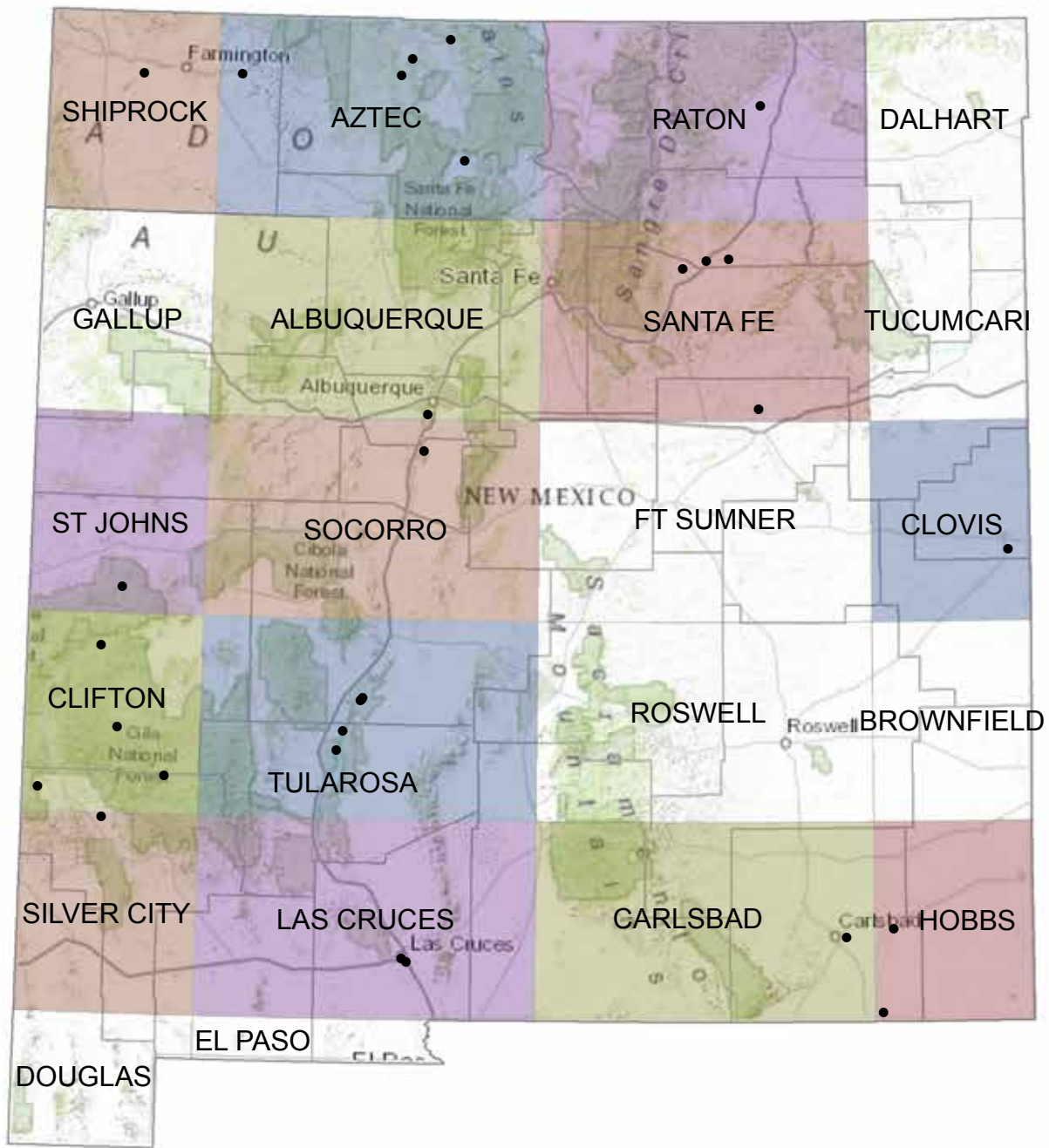
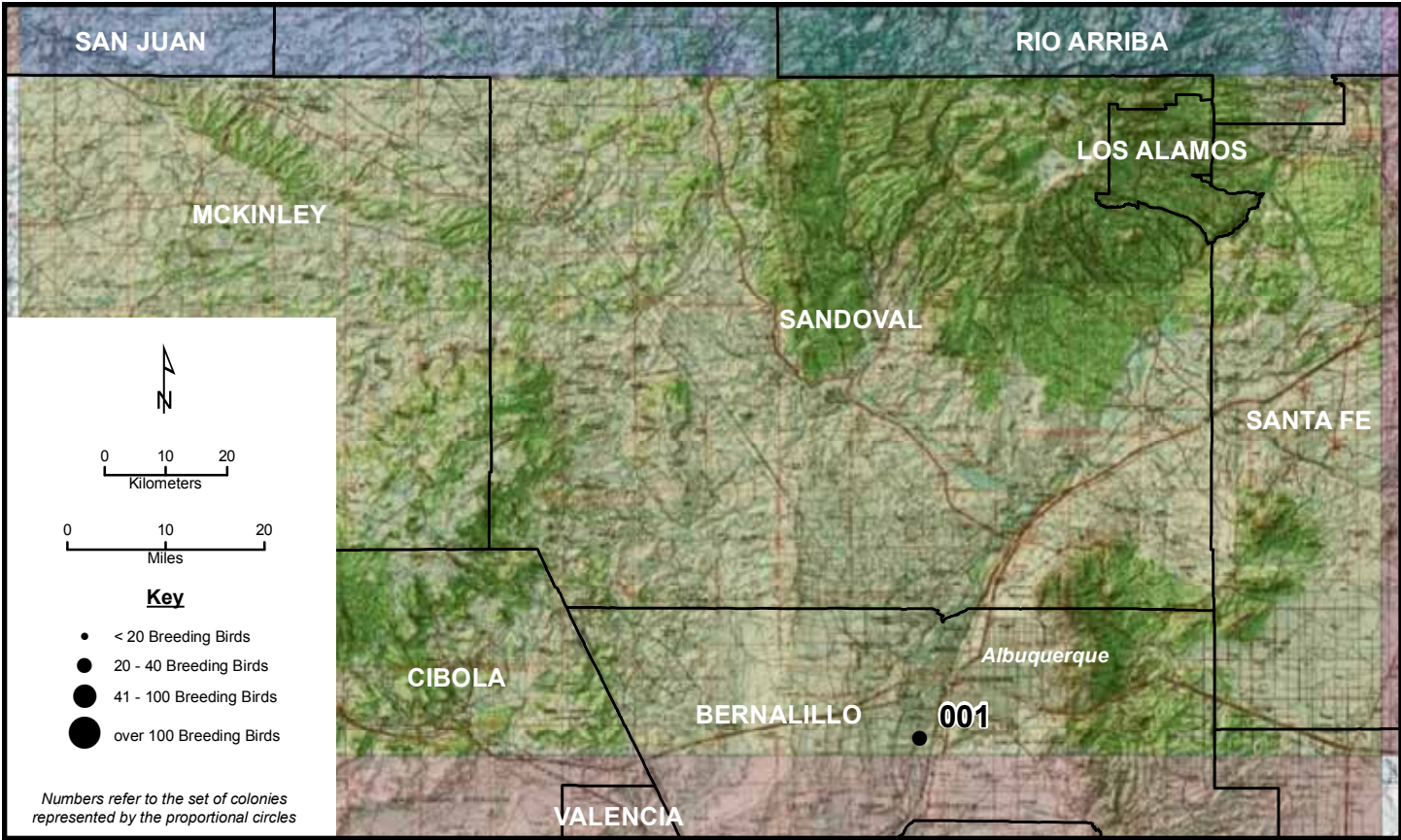
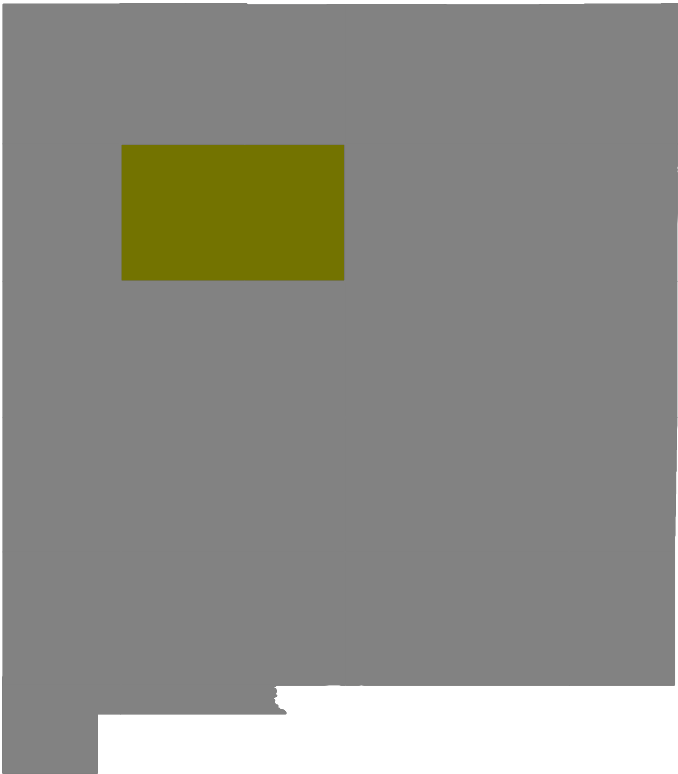


# New Mexico







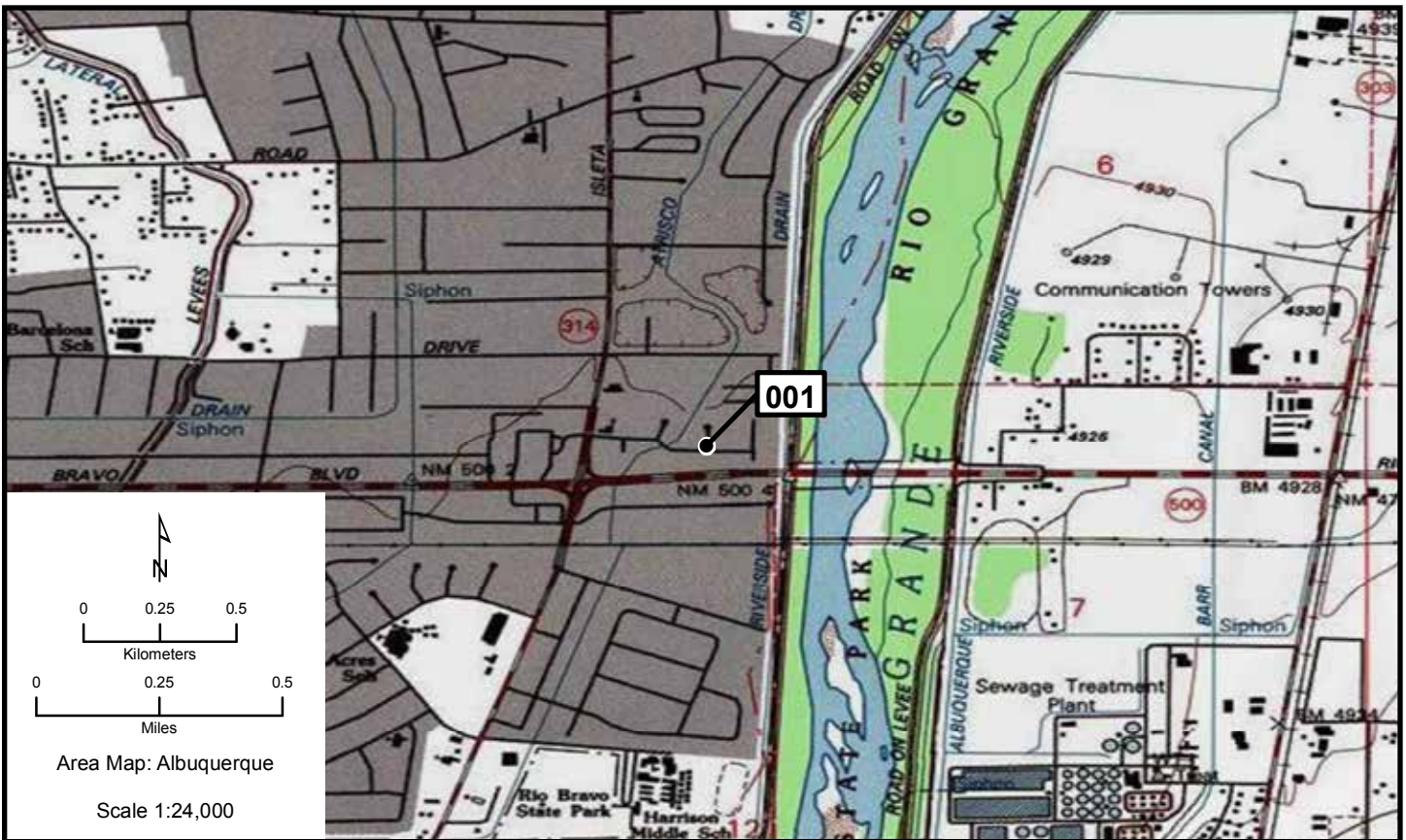
# Albuquerque 001

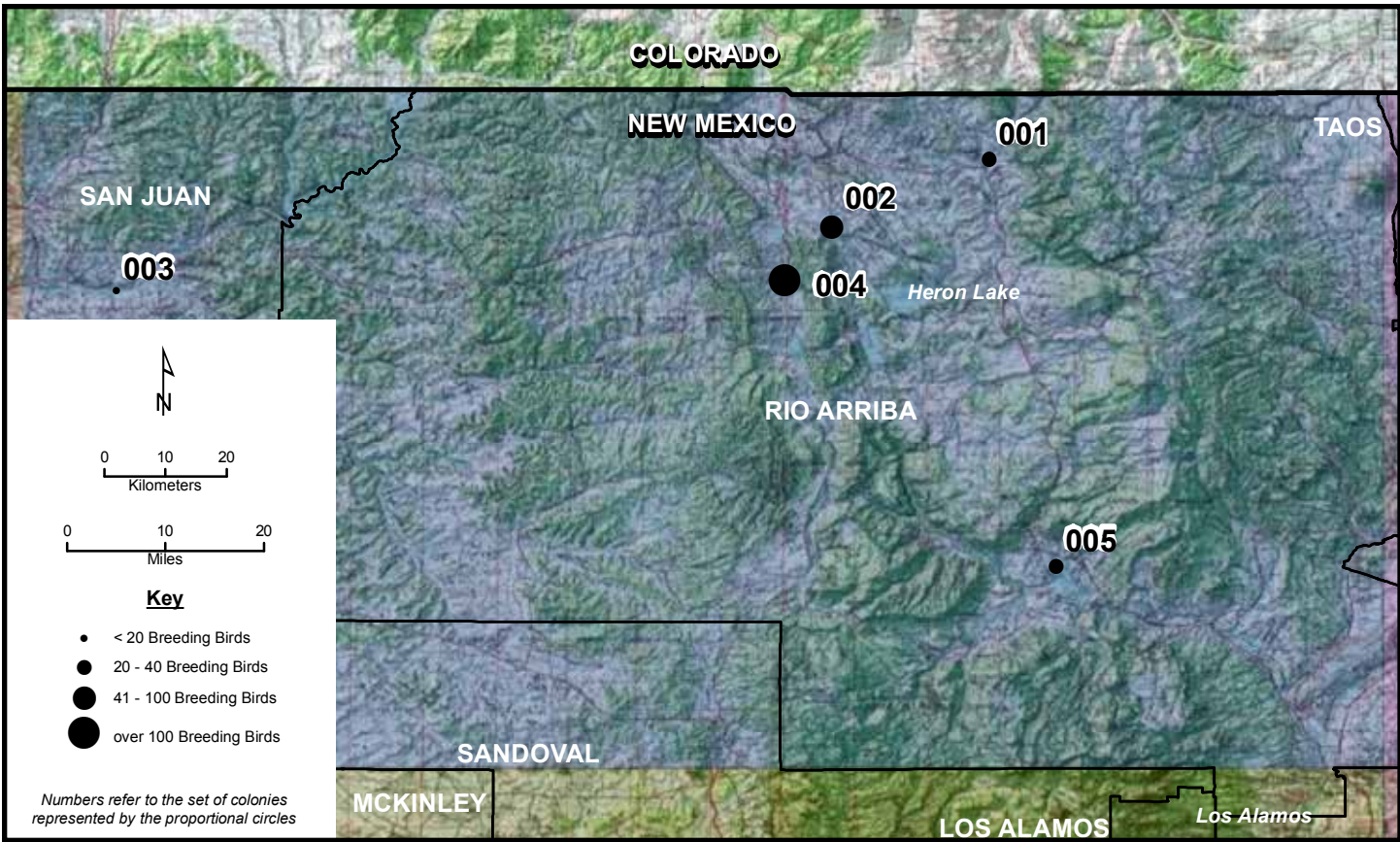
Area Map: 35106a1 (Albuquerque)  
 Site Number: 001  
 BCR 16

Colony Number: 35106a1-001  
 Bernalillo County, NM

Albuquerque: Kelsey Road  
 13N 347000 3877434  
 (WGS84)

Species	# of Nests	Est. # of Breeding Birds	Actual Bird Count	W	Cnv	Date	ST	T	Observers
Snowy Egret	6	12	4	N	2	6/12/2010	C	W	Neely/Liddell
Cattle Egret	7	14	6	N	2	6/12/2010	C	W	Neely/Liddell
Black-crowned Night-Heron	5	10		N	2	6/9/2010	C	W	Joseph





# Aztec 001, 002

Area Map: 36106a1 (Aztec)  
 Site Number: 001  
 BCR 16

Colony Number: 36106a1-001  
 Rio Arriba County, NM

Chama  
 13N 359421 4084787  
 (WGS84)

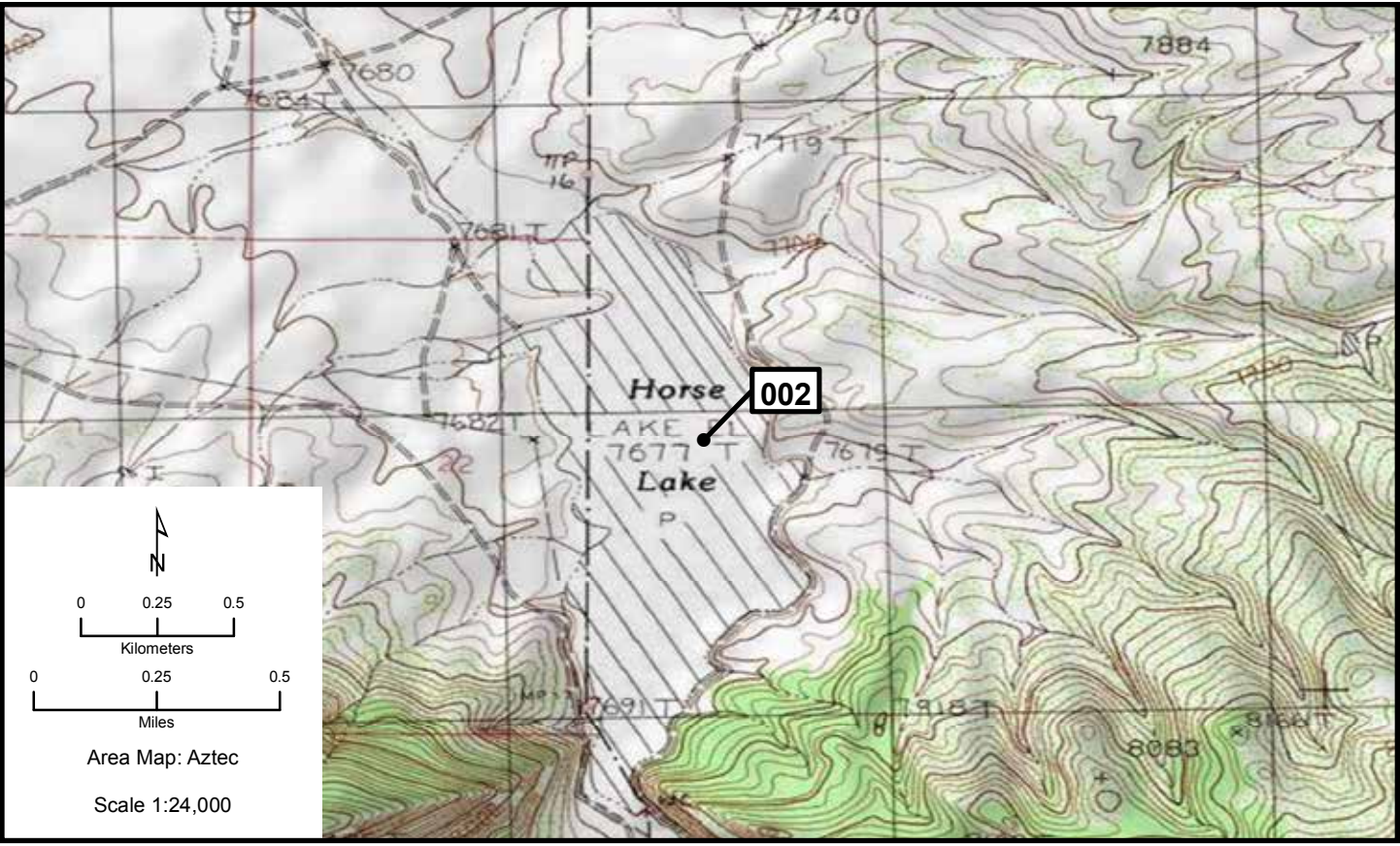
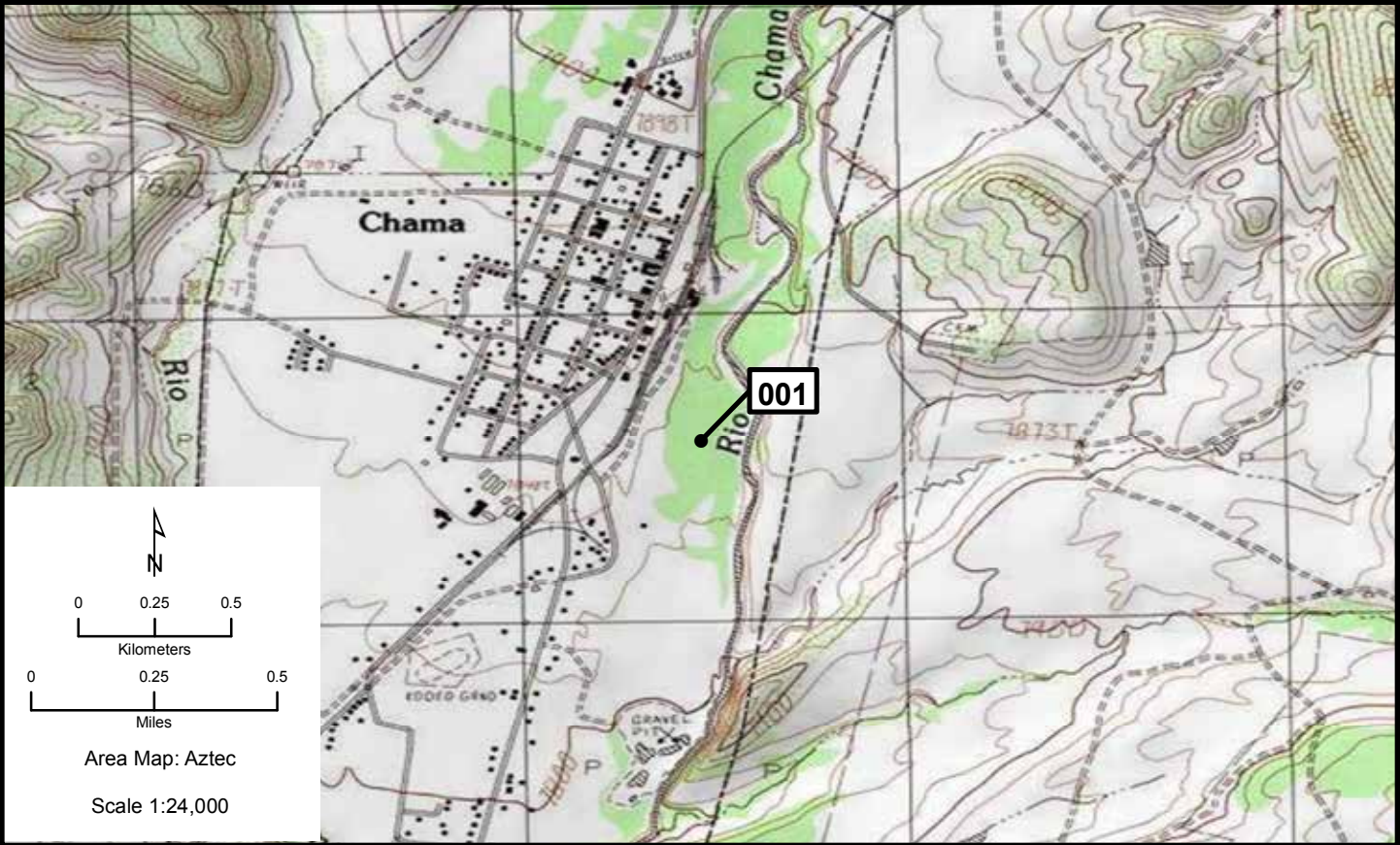
Species	# of Nests	Est. # of Breeding Birds	Actual Bird Count	W	Cnv	Date	ST	T	Observers
Great Blue Heron	13	26	16	N	2	5/13/2011	O	W	Howe

Area Map: 36106a1 (Aztec)  
 Site Number: 002  
 BCR 16

Colony Number: 36106a1-002  
 Rio Arriba County, NM

Horse Lake  
 13N 338482 4074100  
 (WGS84)

Species	# of Nests	Est. # of Breeding Birds	Actual Bird Count	W	Cnv	Date	ST	T	Observers
Eared Grebe	46	92		N	2	7/19/2010	O	W	Stahlecker
Western Grebe	4	8		N	2	7/19/2010	O	W	Stahlecker
Eared Grebe	200	400		N	2	6/29/2007	U	U	Stahlecker
Eared Grebe	225	450		N	2	7/13/2006	U	U	Stahlecker
Eared Grebe	100	200		N	2	7/15/2005	U	U	Stahlecker
Eared Grebe	225	450		N	2	6/20/2004	U	U	Stahlecker
Eared Grebe	225	450		N	2	7/6/2003	U	U	Stahlecker
Eared Grebe	250	500		N	2	6/23/2000	U	U	Stahlecker
Eared Grebe	80	160		N	2	6/28/1993	U	Y	Stahlecker
Western Grebe	2	4		N	2	7/6/2003	U	U	Stahlecker
Western Grebe	8	16		N	2	7/21/2000	U	U	Stahlecker
Western Grebe	6	80	80	B	L	6/17/1996	U	U	Stahlecker
Western Grebe	13	26		N	2	6/28/1993	U	U	Stahlecker





# Aztec 003, 004

Area Map: 36106a1 (Aztec)  
 Site Number: 003  
 BCR 16

Colony Number: 36106a1-003  
 San Juan County, NM

Bloomfield  
 13N 244365 4065995  
 (WGS84)

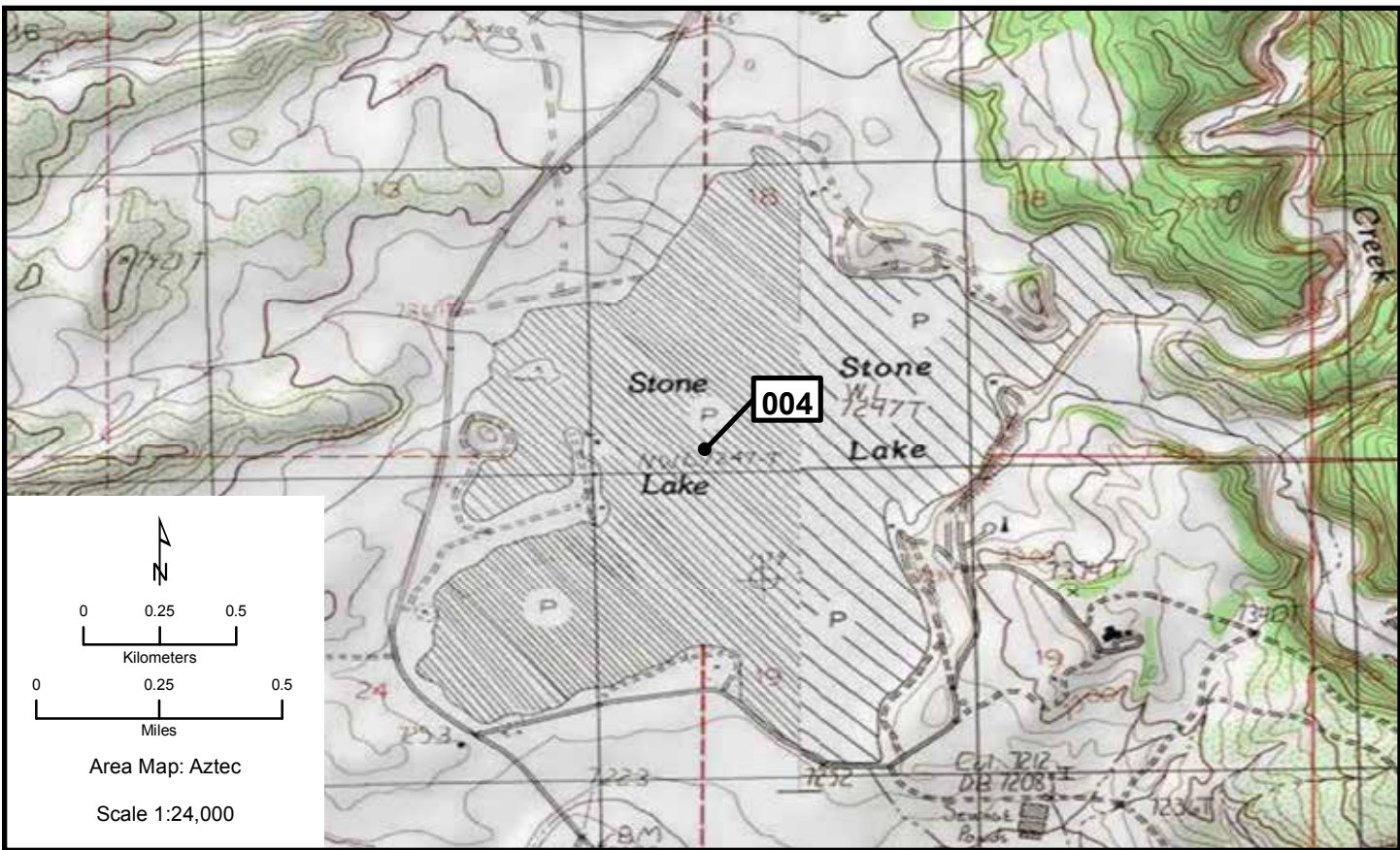
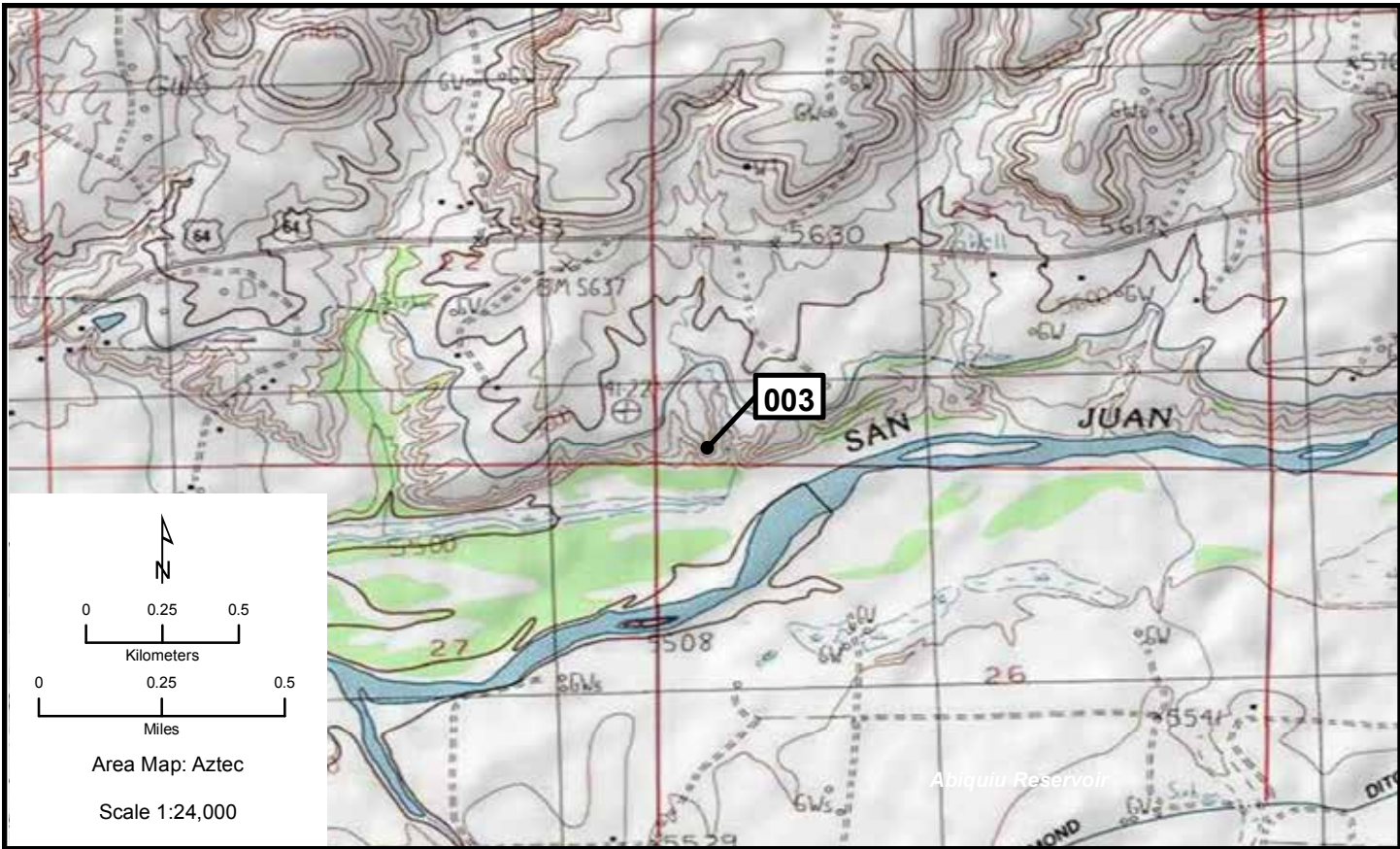
Species	# of Nests	Est. # of Breeding Birds	Actual Bird Count	W	Cnv	Date	ST	T	Observers
Great Blue Heron		8	8	B	L	4/17/2011	O	U	Newman

Area Map: 36106a1 (Aztec)  
 Site Number: 004  
 BCR 16

Colony Number: 36106a1-004  
 Rio Arriba County, NM

Stone Lake  
 13N 332250 4065284  
 (WGS84)

Species	# of Nests	Est. # of Breeding Birds	Actual Bird Count	W	Cnv	Date	ST	T	Observers
Eared Grebe	95	190	190	N	2	7/19/2010	O	W	Stahlecker
Western Grebe	17	34	17	N	2	5/20/2010	O	W	Stahlecker
Eared Grebe	9	18		N	2	Summer 2007	U	U	Stahlecker
Eared Grebe	26	52		N	2	7/15/2005	U	U	Stahlecker
Eared Grebe	44	88		N	2	8/10/2004	U	U	Stahlecker
Eared Grebe	3	6		N	2	7/3/1999	U	U	Stahlecker
Western Grebe	6	12		N	2	5/9/2008	U	U	Stahlecker
Western Grebe	30	60		N	2	7/13/2006	U	U	Stahlecker
Western Grebe	45	90		N	2	6/20/2004	U	U	Stahlecker
Western Grebe	2	4		N	2	7/6/2003	U	U	Stahlecker
Western Grebe	4	8		N	2	6/13:7/12/1999	U	U	Stahlecker
Western Grebe	14	28		N	2	6/14/1992	U	U	Stahlecker
Western Grebe	3	15	15	B	L	6/18/1980	U	U	Nelson
Clark's Grebe	1	2		N	2	5/9/2008	U	U	Stahlecker



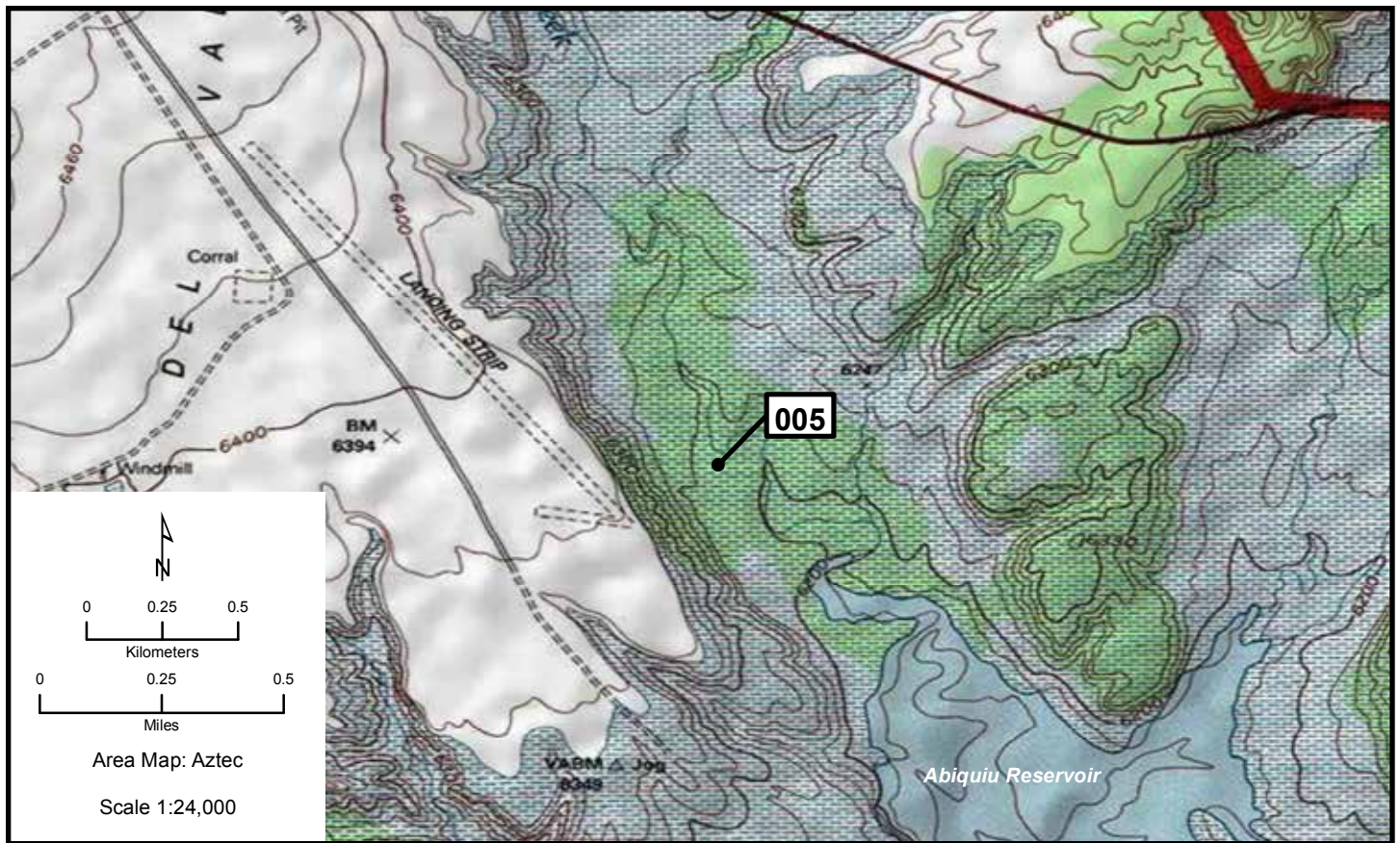
# Aztec 005

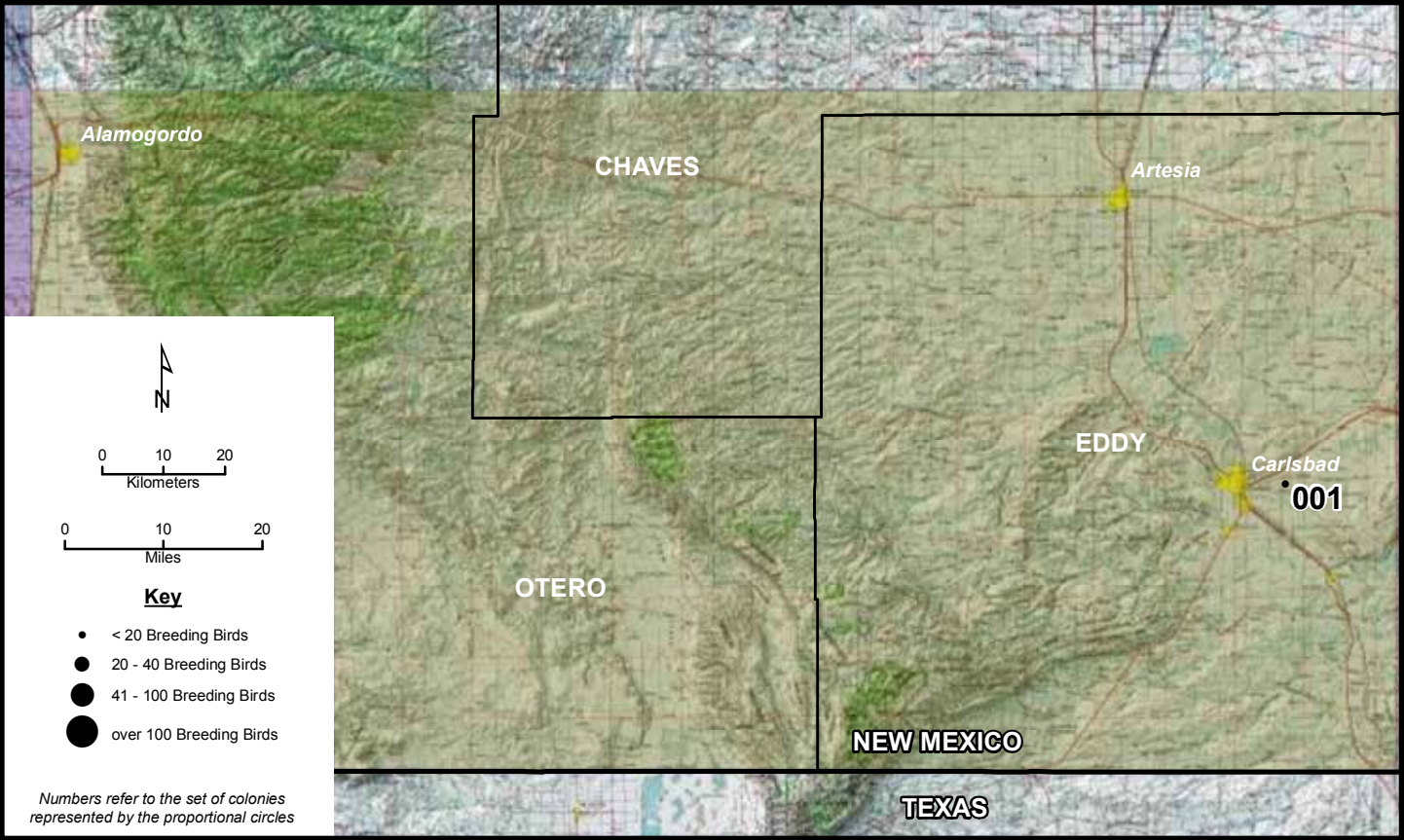
Area Map: 36106a1 (Aztec)  
 Site Number: 005  
 BCR 16

Colony Number: 36106a1-005  
 Rio Arriba County, NM

Abiquiu Reservoir  
 13N 367159 4018086  
 (WGS84)

Species	# of Nests	Est. # of Breeding Birds	Actual Bird Count	W	Cnv	Date	ST	T	Observers
Double-crested Cormorant	13	26		N	2	5/24/2010	A	W	Watson
Double-crested Cormorant	7	14		N	2	6/2:7/2/1993	U	Y	Hubbard/Rustay
Double-crested Cormorant	29	58		N	2	5/23/1991	U	U	Hubbard
Double-crested Cormorant	10	20		N	2	6/7/1987	U	Y	Insley
Double-crested Cormorant	1	2		N	2	3/25/1985	U	U	Domenici
Double-crested Cormorant	1	2		N	2	6/24/1984	U	U	Vaught
Double-crested Cormorant	3	6		N	2	6/26/1981	U	U	Hundertmark
Double-crested Cormorant	3	6		N	2	6/28/1980	U	U	Peterson et al.
Great Blue Heron	4	8		N	2	6/19/1987	U	U	Rustay





# Carlsbad 001

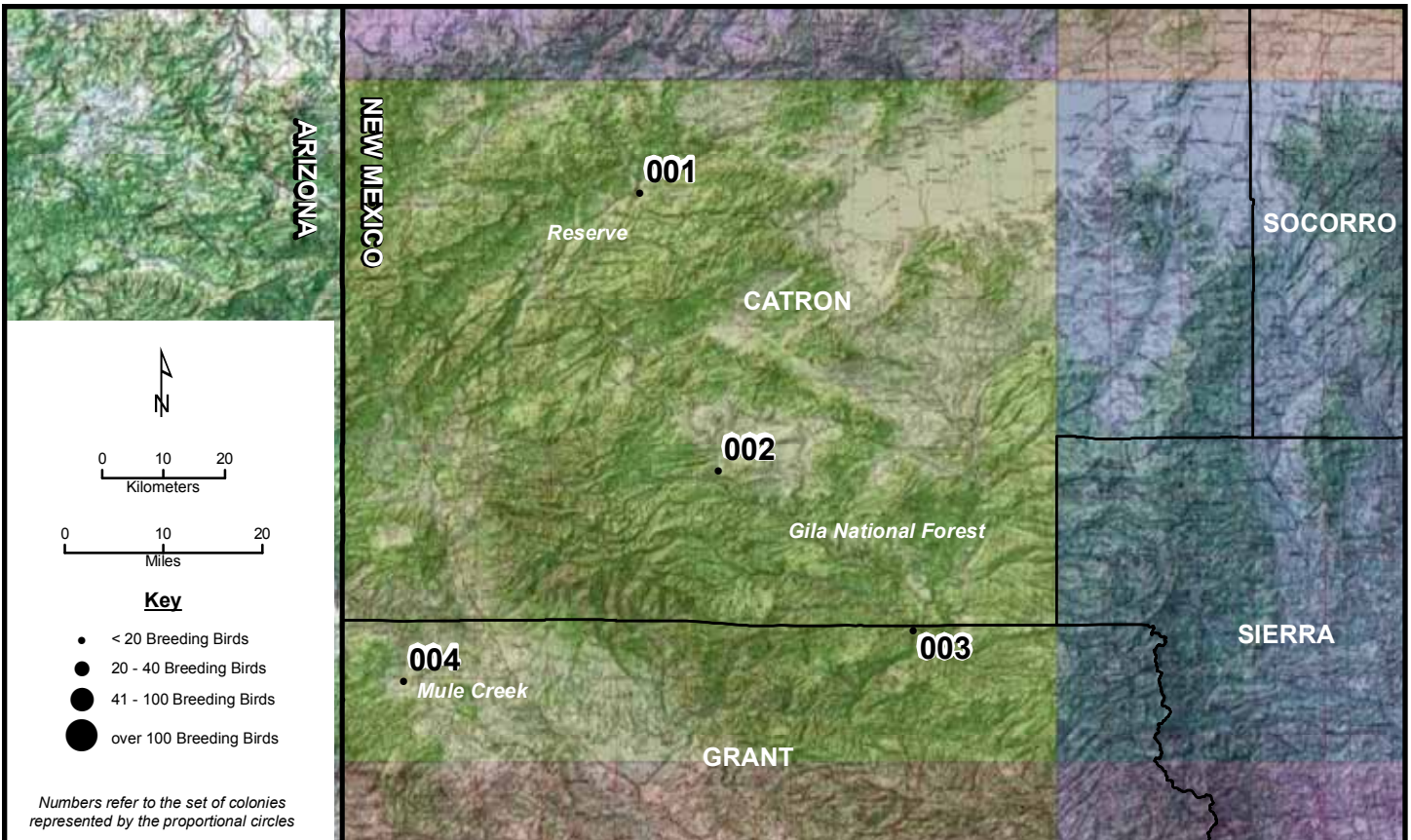
Area Map: 32104a1 (Carlsbad)  
 Site Number: 001  
 BCR 35

Colony Number: 32104a1-001  
 Eddy County, NM

Carlsbad: Old Refinery Road  
 13N 578824 3587599  
 (WGS84)

Species	# of Nests	Est. # of Breeding Birds	Actual Bird Count	W	Cnv	Date	ST	T	Observers
Great Blue Heron	8	16	16	N	2	3/18/2011	O	W	Chopp





**Clifton 001, 002**

**Area Map: 33108a1 (Clifton)**  
**Site Number: 001**  
**BCR 34**

**Colony Number: 33108a1-001**  
**Catron County, NM**

**Apache Creek**  
**12N 721092 3746733**  
**(NAD83)**

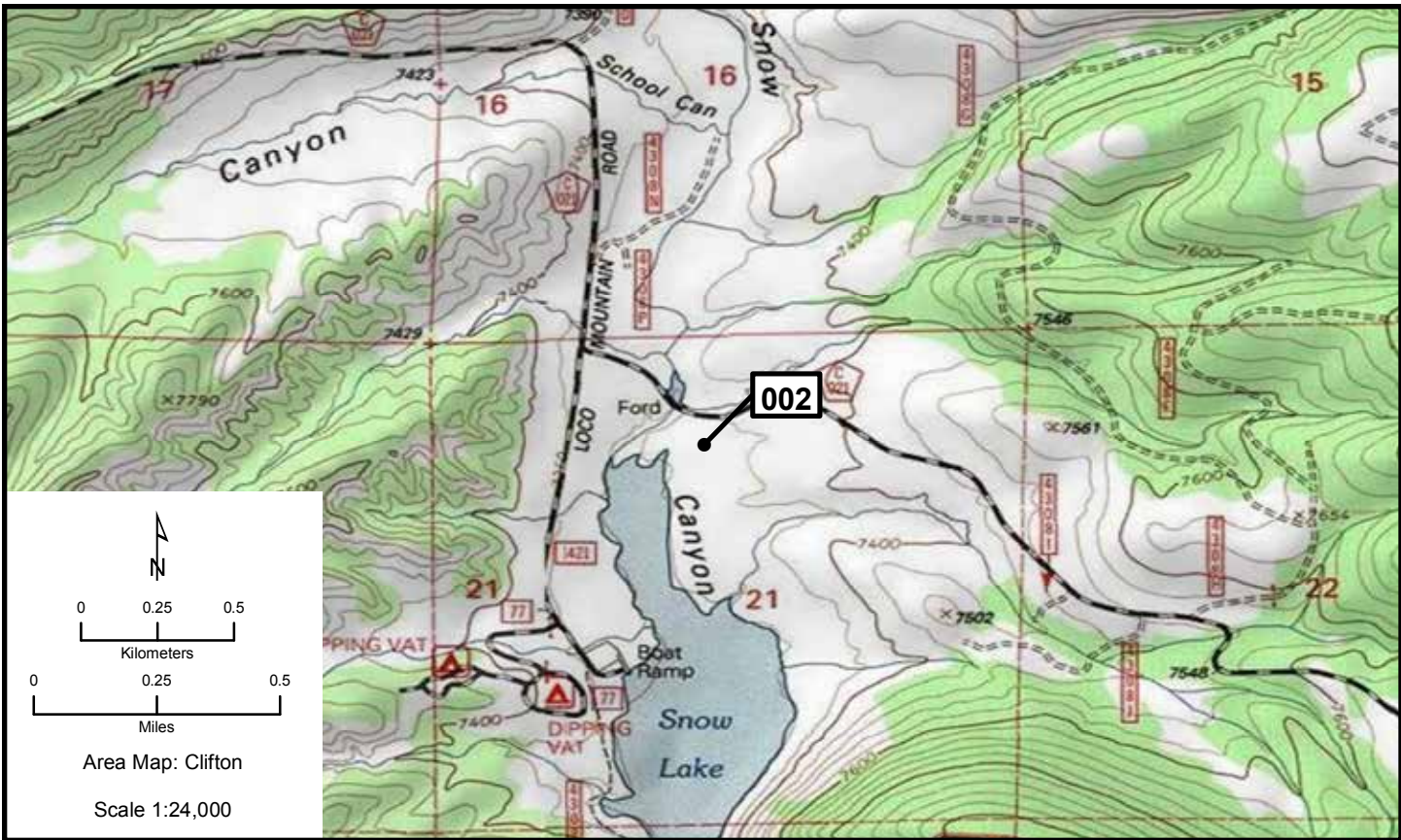
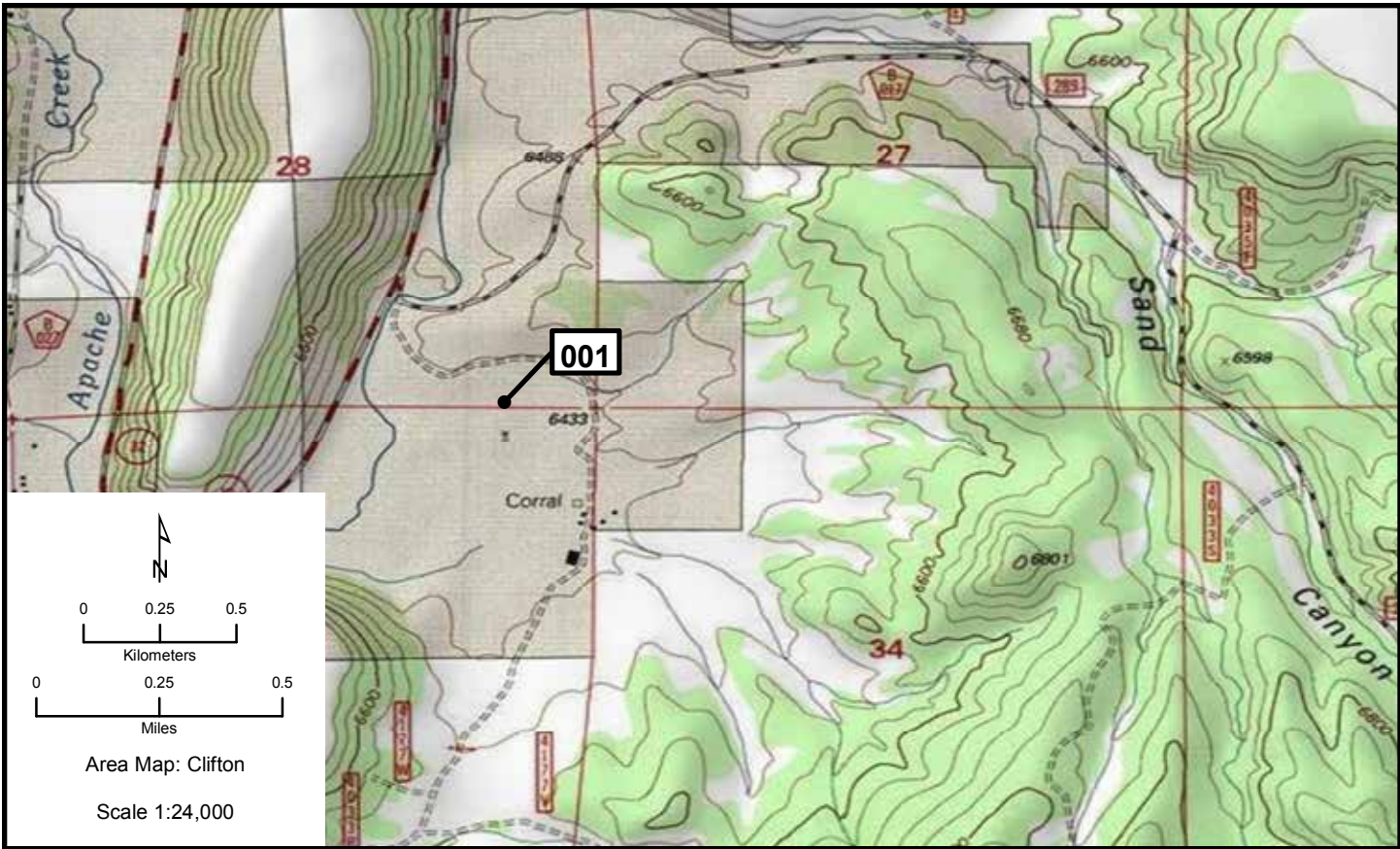
<b>Species</b>	<b># of Nests</b>	<b>Est. # of Breeding Birds</b>	<b>Actual Bird Count</b>	<b>W</b>	<b>Cnv</b>	<b>Date</b>	<b>ST</b>	<b>T</b>	<b>Observers</b>
Great Blue Heron	1	2	2	N	2	5/20/2010	O	W	Williams III
Great Blue Heron	2	4		N	2	5/1/2007	U	U	Lewis

**Area Map: 33108a1 (Clifton)**  
**Site Number: 002**  
**BCR 34**

**Colony Number: 33108a1-002**  
**Catron County, NM**

**Snow Lake**  
**12N 732809 3701746**  
**(NAD83)**

<b>Species</b>	<b># of Nests</b>	<b>Est. # of Breeding Birds</b>	<b>Actual Bird Count</b>	<b>W</b>	<b>Cnv</b>	<b>Date</b>	<b>ST</b>	<b>T</b>	<b>Observers</b>
Great Blue Heron	1	2	6	N	2	5/21/2010	O	W	Williams III
Great Blue Heron	1	2		N	2	6/23/2009	U	U	Hayes
Great Blue Heron				N		5/4/1986	U	X	Steel





**Clifton 003, 004**

**Area Map: 33108a1 (Clifton)**  
**Site Number: 003**  
**BCR 34**

**Colony Number: 33108a1-003**  
**Grant County, NM**

**Gila Hot Springs**  
**12N 760153 3676443**  
**(NAD83)**

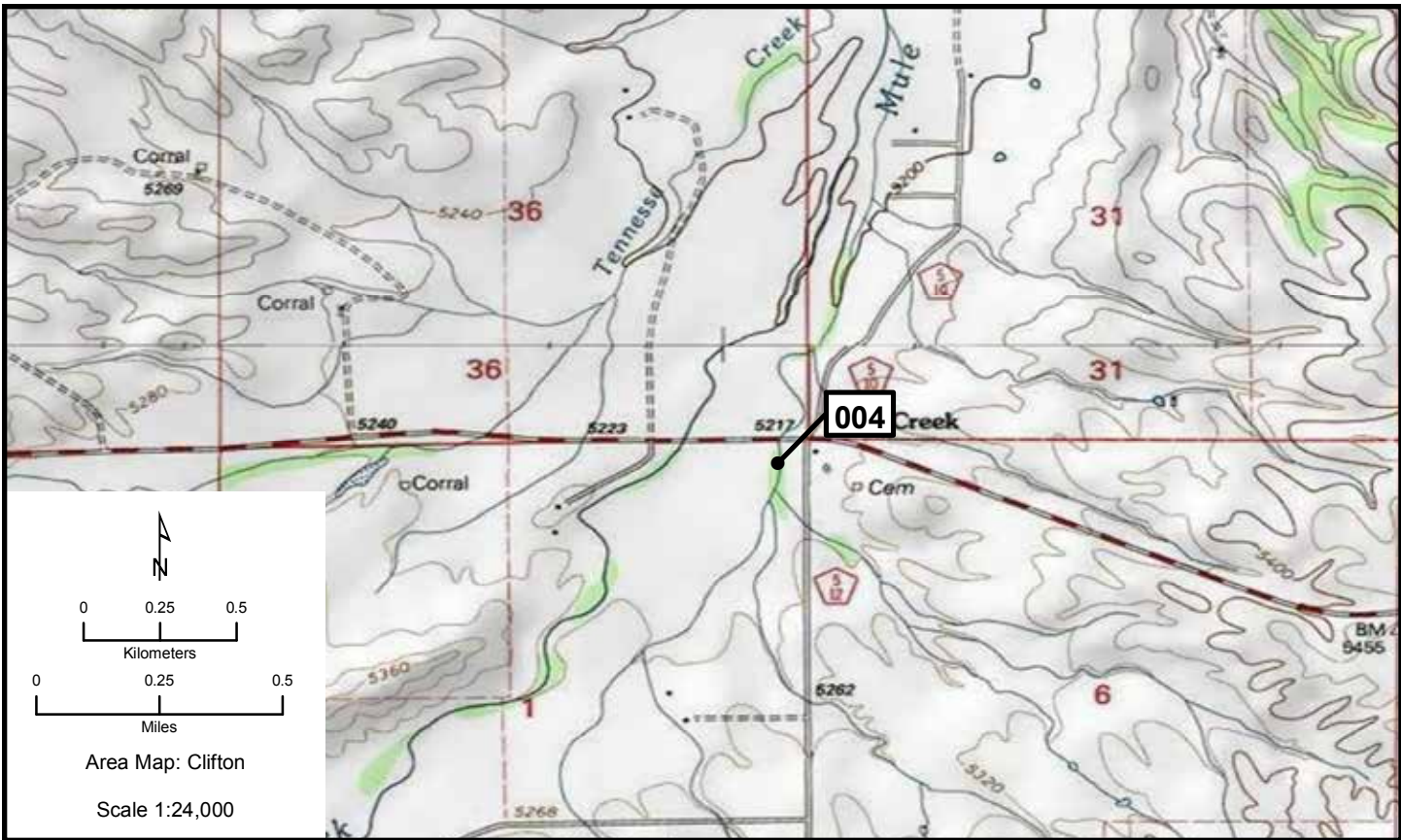
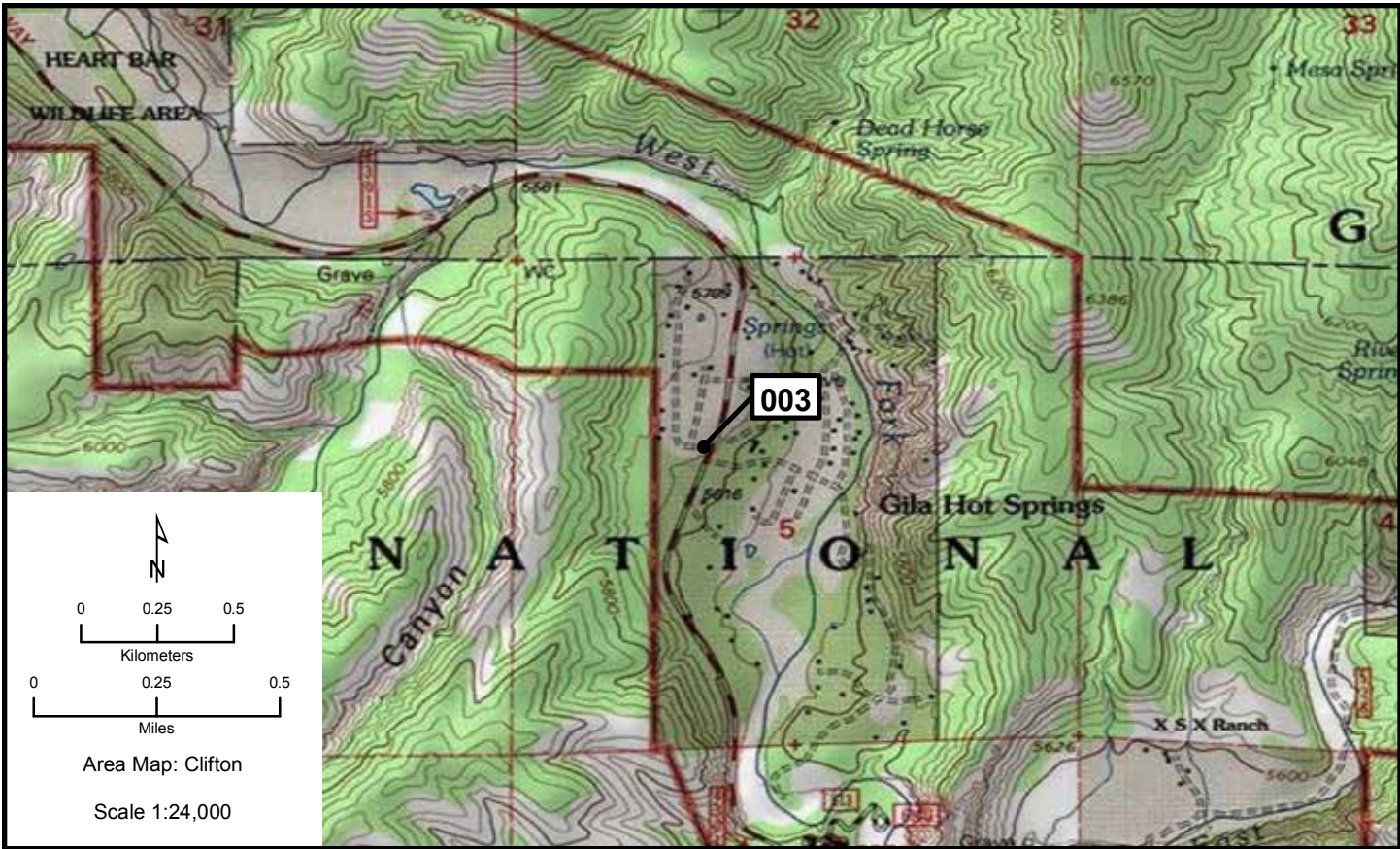
<b>Species</b>	<b># of Nests</b>	<b>Est. # of Breeding Birds</b>	<b>Actual Bird Count</b>	<b>W</b>	<b>Cnv</b>	<b>Date</b>	<b>ST</b>	<b>T</b>	<b>Observers</b>
Great Blue Heron	8	16		N	2	6/22/2010	O	W	Williams III
Great Blue Heron	3	6		N	2	6/-/2006	U	U	Beatty
Great Blue Heron				N		Spring 1994	U	X	Fisher
Great Blue Heron	32	64		N	2	Spring 1987	U	U	Fisher
Great Blue Heron	36	72		N	2	6/20/1982	U	U	Fisher
Great Blue Heron	30	60		N	2	Spring 1981	U	U	Fisher
Great Blue Heron	5	10		N	2	Spring 1975	U	U	Fisher
Great Blue Heron				N		Summer 1974	U	X	Fisher

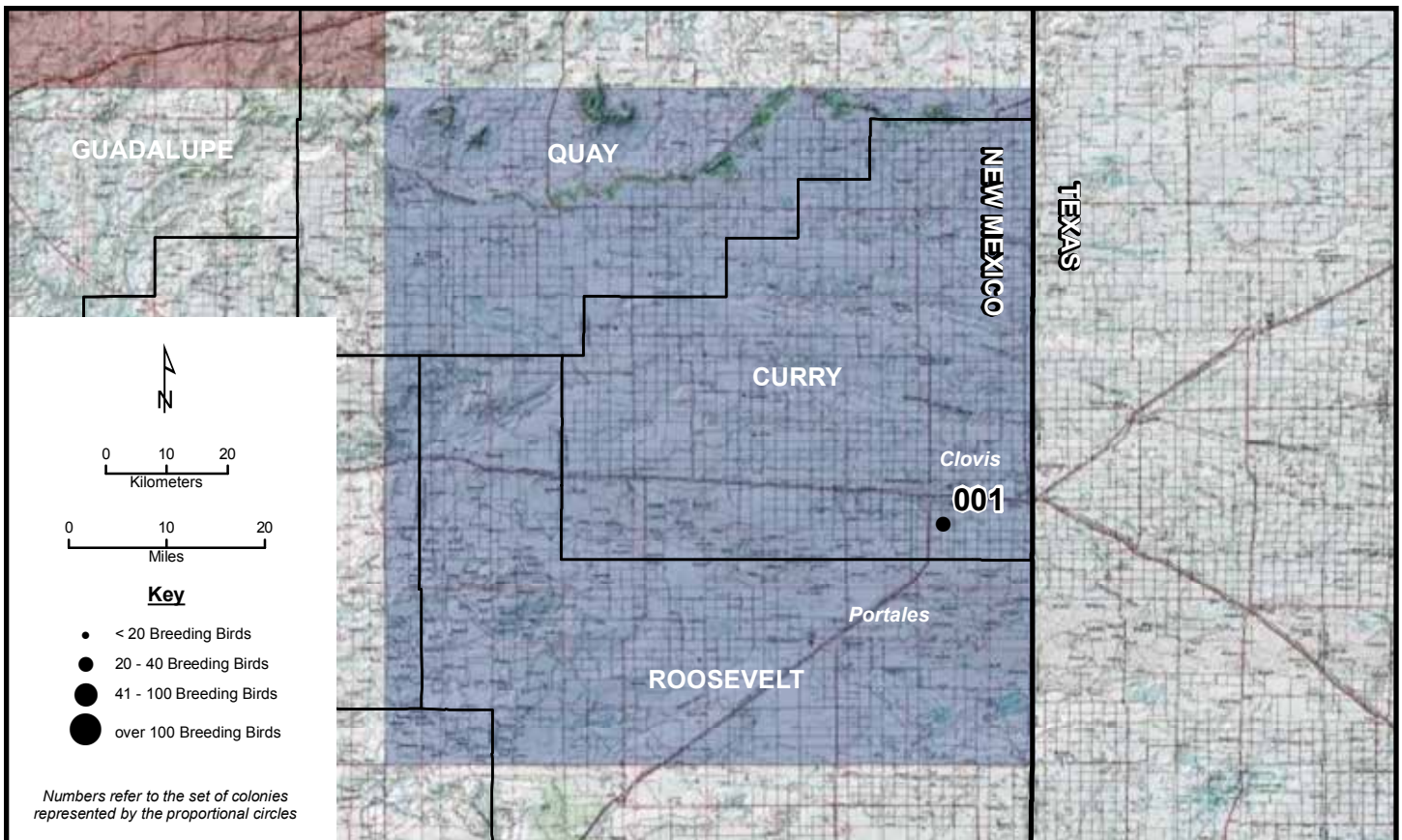
**Area Map: 33108a1 (Clifton)**  
**Site Number: 004**  
**BCR 34**

**Colony Number: 33108a1-004**  
**Grant County, NM**

**Mule Creek**  
**12N 690572 3666623**  
**(WGS84)**

<b>Species</b>	<b># of Nests</b>	<b>Est. # of Breeding Birds</b>	<b>Actual Bird Count</b>	<b>W</b>	<b>Cnv</b>	<b>Date</b>	<b>ST</b>	<b>T</b>	<b>Observers</b>
Great Blue Heron	2	4	2	N	2	5/22/2010	O	W	Williams III
Great Blue Heron	2	4		N	2	Summer 2007	U	U	Lewis
Great Blue Heron	2	4		N	2	5/13/2006	U	U	Lewis
Great Blue Heron	2	4		N	2	6/15/1974	U	U	Fisher
Great Blue Heron	1	2		N	2	Summer 1973	U	U	Fisher



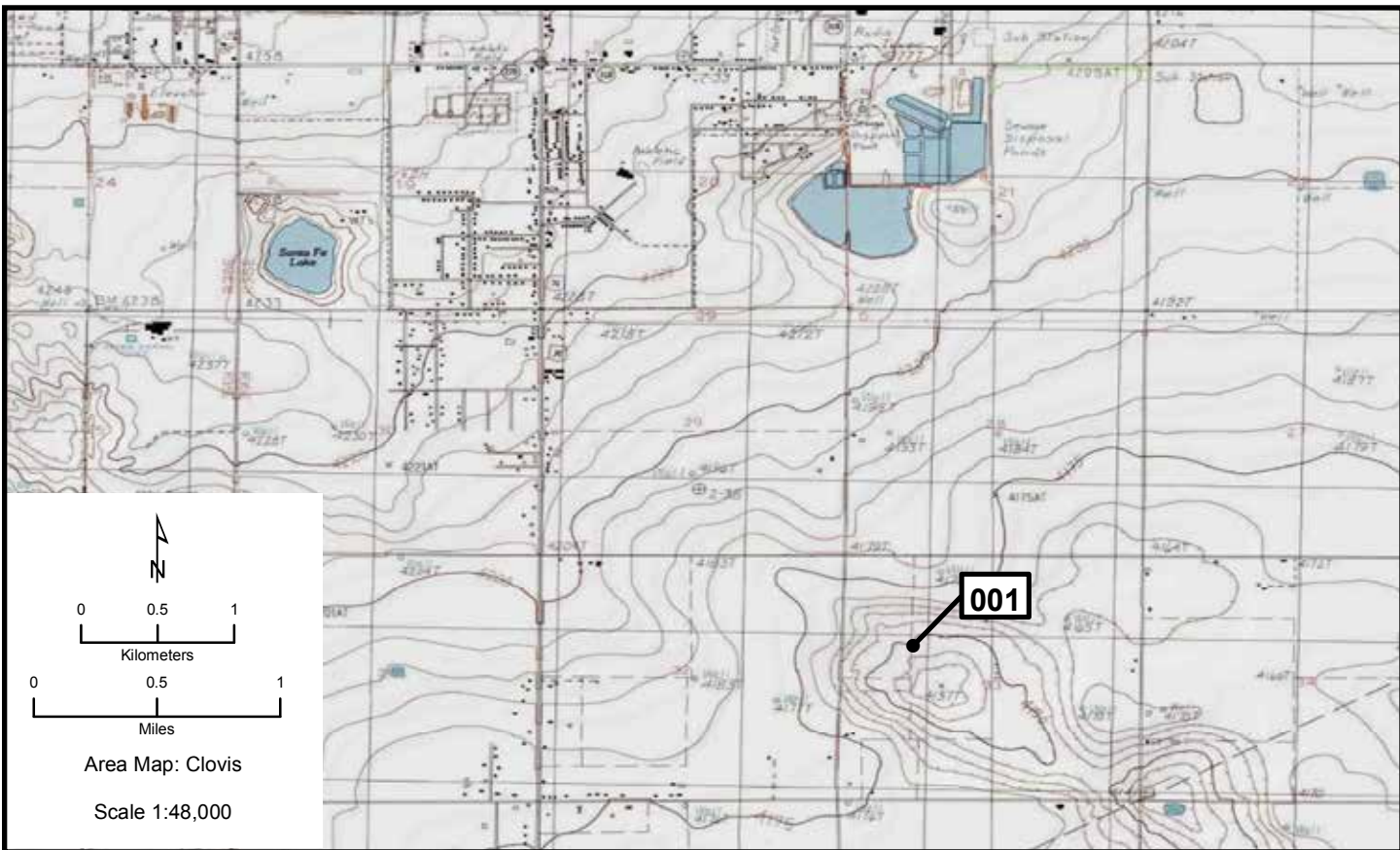


Area Map: 34102a1 (Clovis)  
 Site Number: 001  
 BCR 18

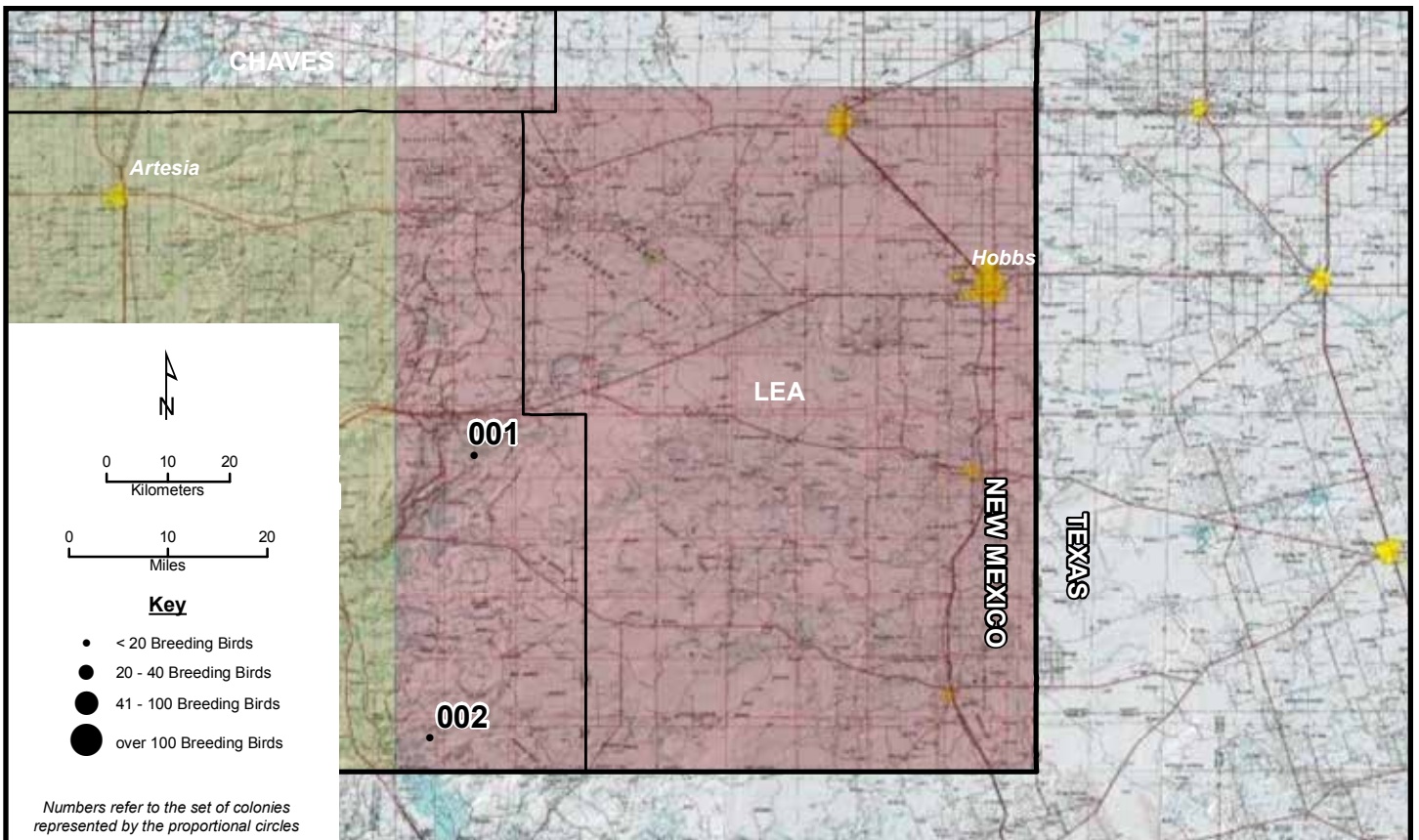
Colony Number: 34102a1-001  
 Curry County, NM

Clovis WWTP  
 13N 667870 3803139  
 (WGS 84)

Species	# of Nests	Est. # of Breeding Birds	Actual Bird Count	W	Cnv	Date	ST	T	Observers
Double-crested Cormorant	16	32	35	N	2	4/27/2010	O	W	Howe
Eared Grebe	20	40		N	2	8/8/2008	U	U	Hilchey
Eared Grebe	4	8	4	N	2	8/28/2006	U	U	West
Eared Grebe	1	2		N	2	8/21/2005	U	U	West
Double-crested Cormorant	5	10		N	2	5/25/2007	U	U	Oldenettel
Double-crested Cormorant	2	4		N	2	5/27/2006	U	U	Rustay



# Hobbs

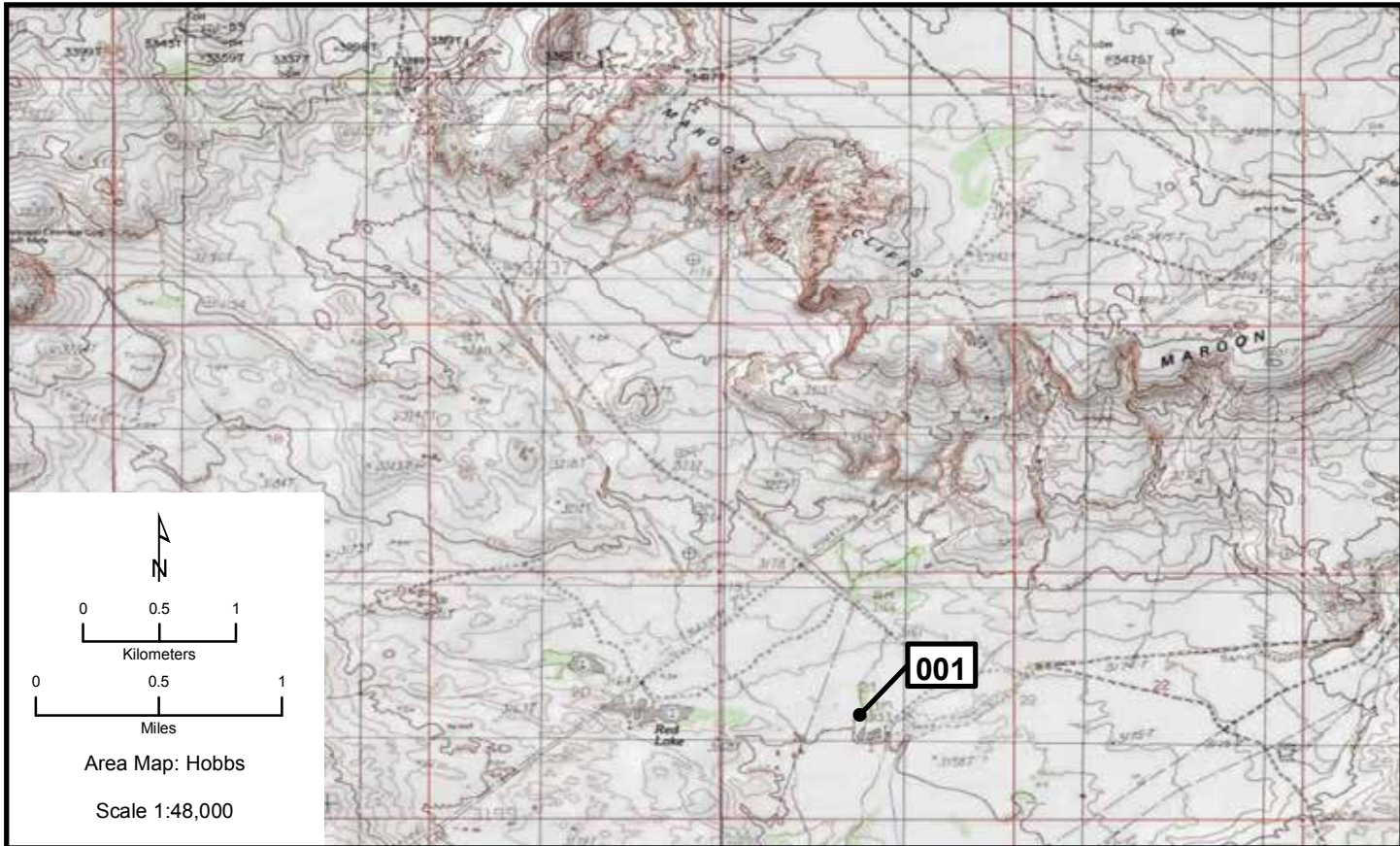


Area Map: 32102a1 (Hobbs)  
Site Number: 001  
BCR 35

Colony Number: 32102a1-001  
Eddy County, NM

Laguna Grande: Potash Road  
13N 604718 3592379  
(WGS84)

Species	# of Nests	Est. # of Breeding Birds	Actual Bird Count	W	Cnv	Date	ST	T	Observers
Great Blue Heron	2	4	5	N	2	3/22/2011	O	W	Chopp



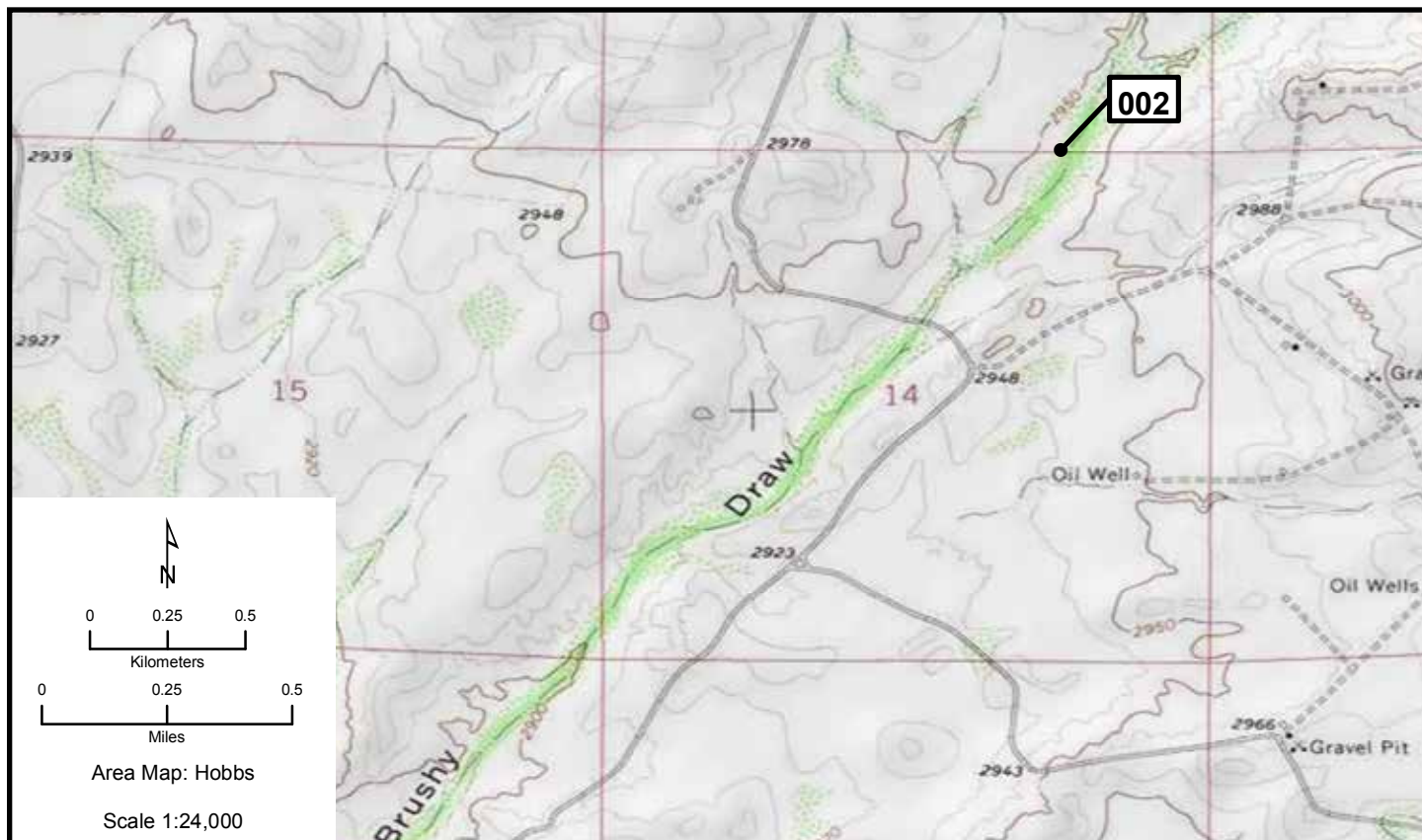
# Hobbs 002

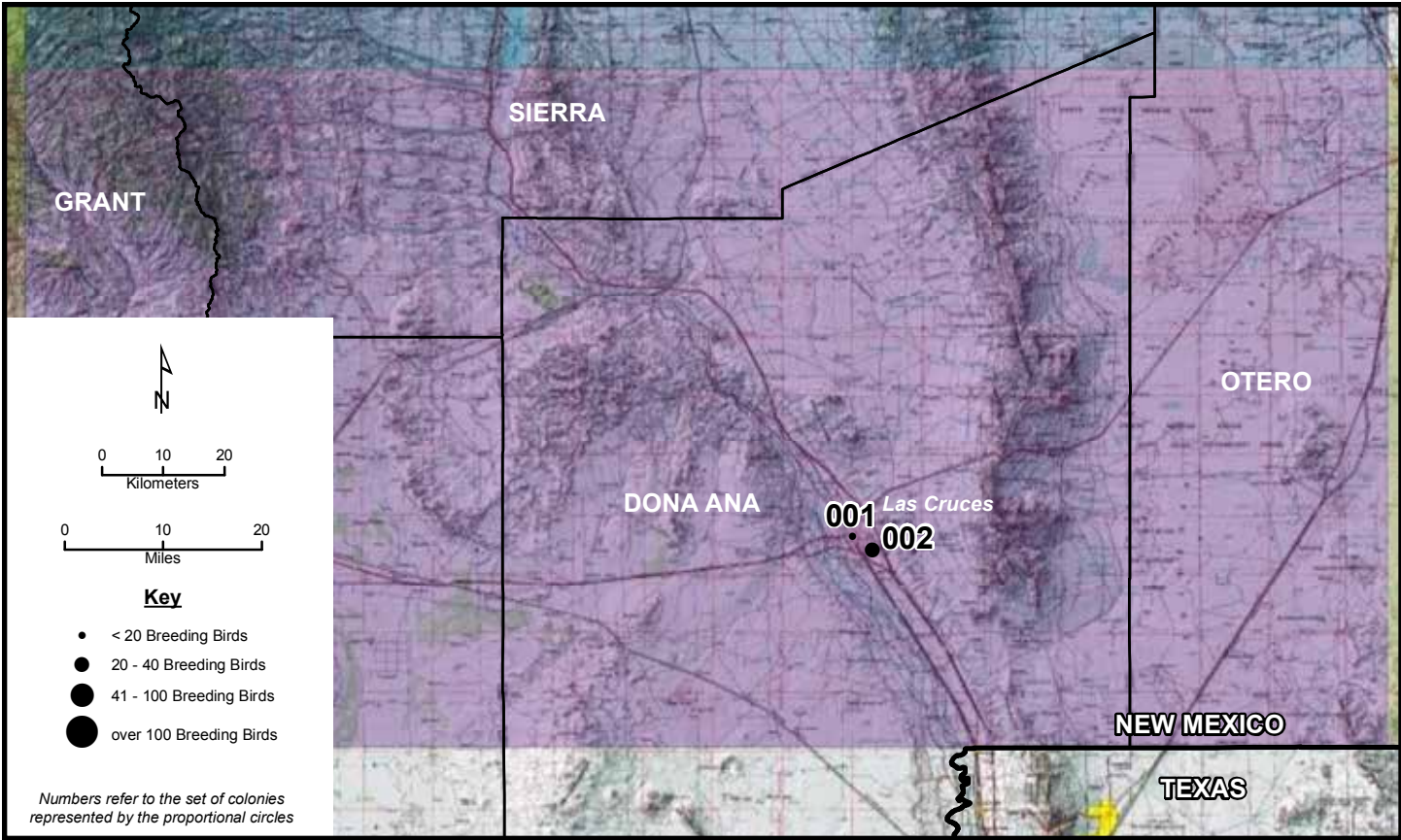
Area Map: 32102a1 (Hobbs)  
 Site Number: 002  
 BCR 35

Colony Number: 32102a1-002  
 Eddy County, NM

Phantom Banks  
 13N 599142 3546385  
 (WGS84)

Species	# of Nests	Est. # of Breeding Birds	Actual Bird Count	W	Cnv	Date	ST	T	Observers
Great Blue Heron	2	4	4	N	2	5/2/2011	O	W	Chopp
Great Blue Heron				N		3/-/1989	U	X	West
Great Blue Heron	15	30		N	2	5/25/1988	U	Y	West







# Las Cruces 001, 002

Area Map: 32106a1 (Las Cruces)  
 Site Number: 001  
 BCR 35

Colony Number: 32106a1-001  
 Doña Ana County, NM

Las Cruces: 427 N Reymond St  
 13N 332014 3576360  
 (WGS84)

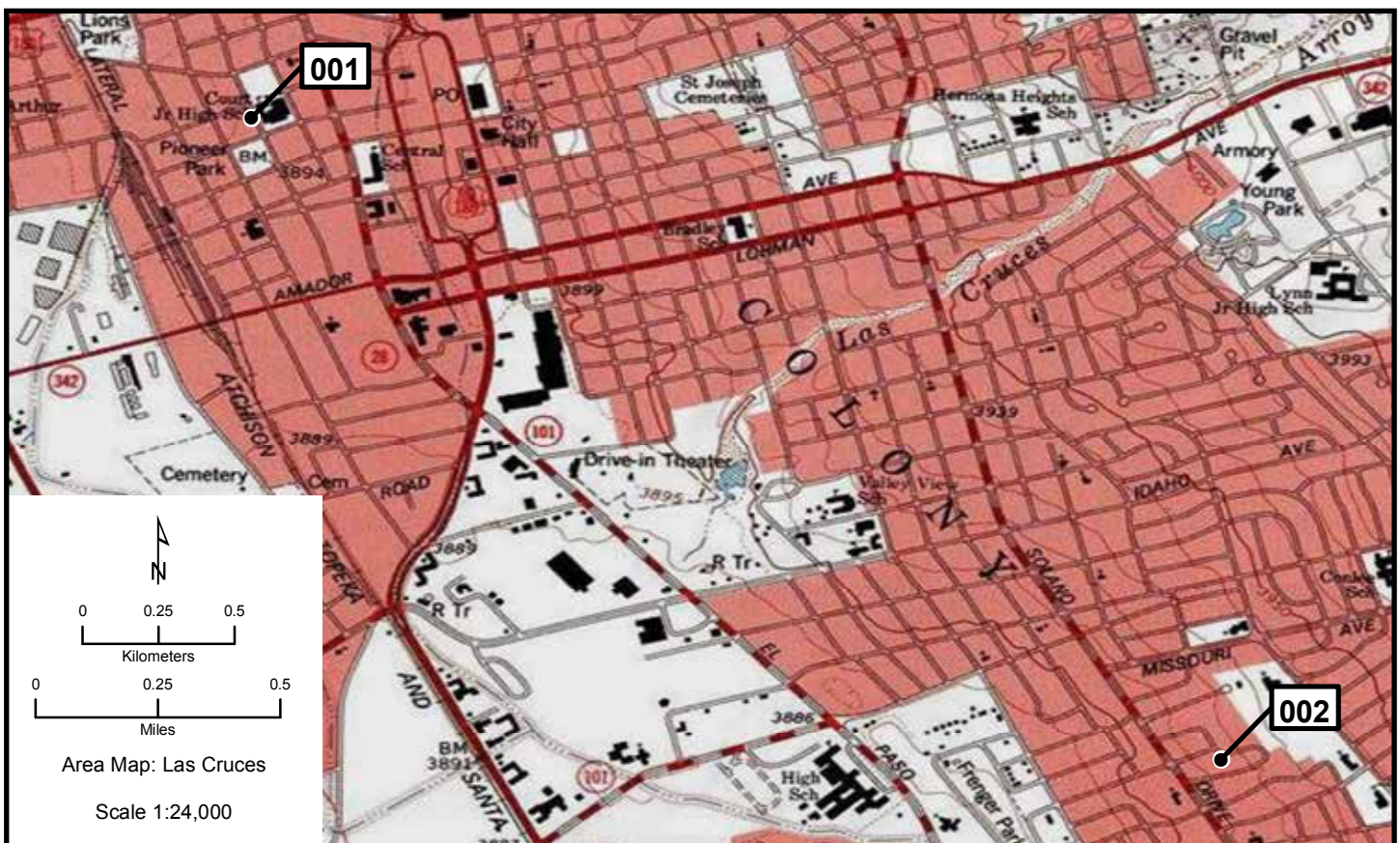
Species	# of Nests	Est. # of Breeding Birds	Actual Bird Count	W	Cnv	Date	ST	T	Observers
Black-crowned Night-Heron		8	8	B	L	6/3/2010	C	Z	Griffin

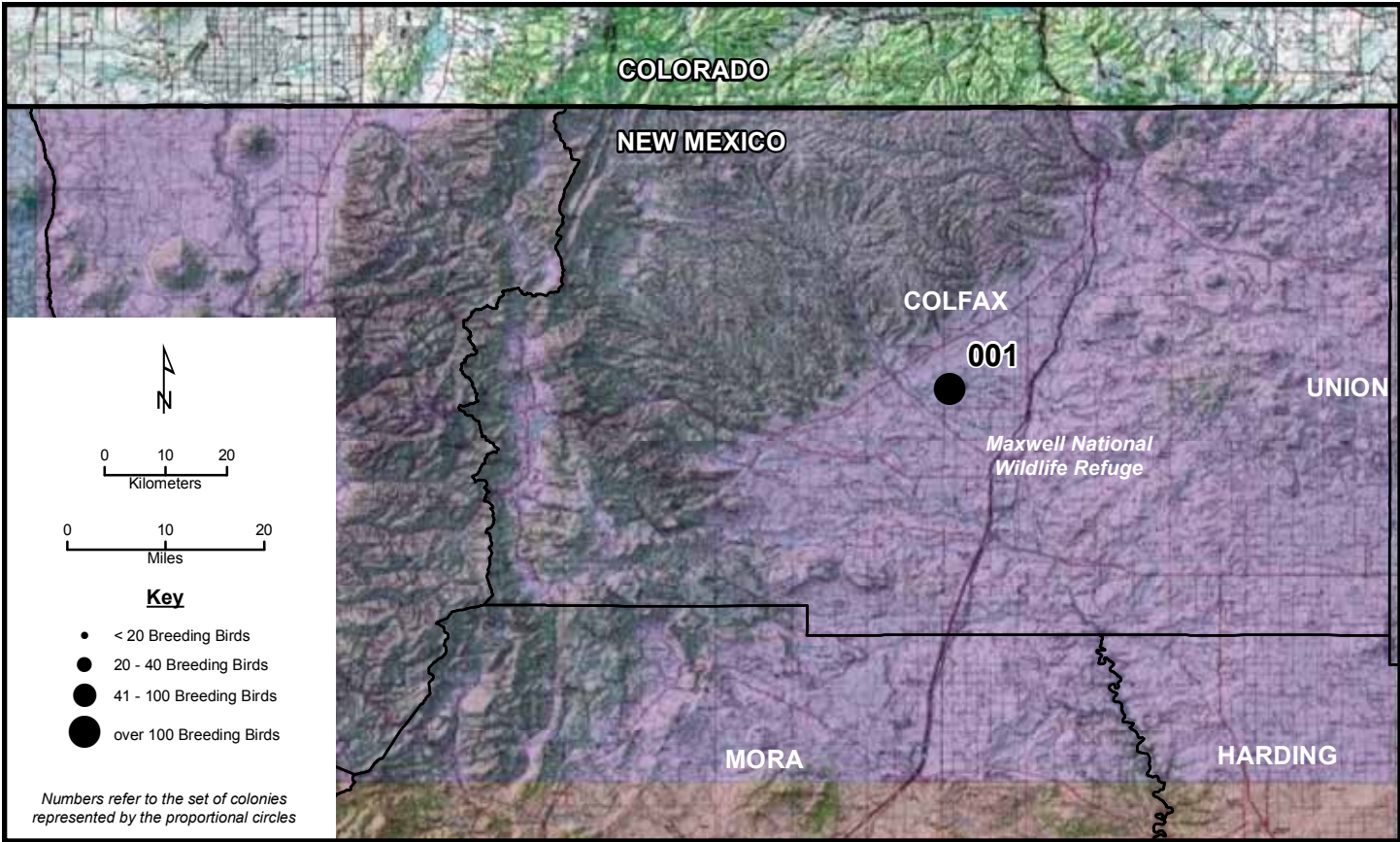
Area Map: 32106a1 (Las Cruces)  
 Site Number: 002  
 BCR 35

Colony Number: 32106a1-002  
 Doña Ana County, NM

Las Cruces: 1335 Corbett Drive  
 13N 334679 3574212  
 (WGS84)

Species	# of Nests	Est. # of Breeding Birds	Actual Bird Count	W	CNV	Date	ST	T	Observers
Cattle Egret	20	40	15	N	2	7/15/2010	C	Z	Roper





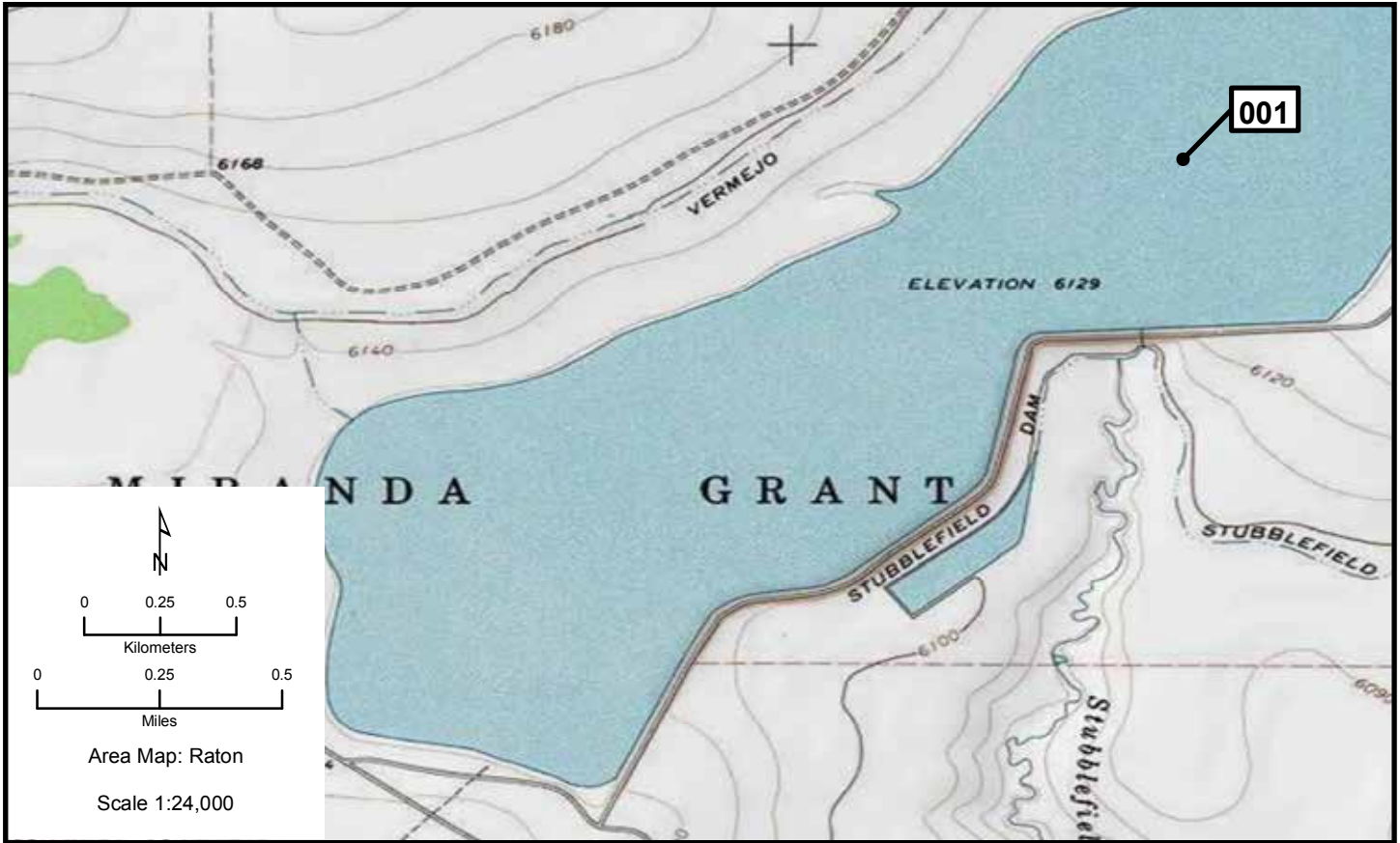
# Raton 001

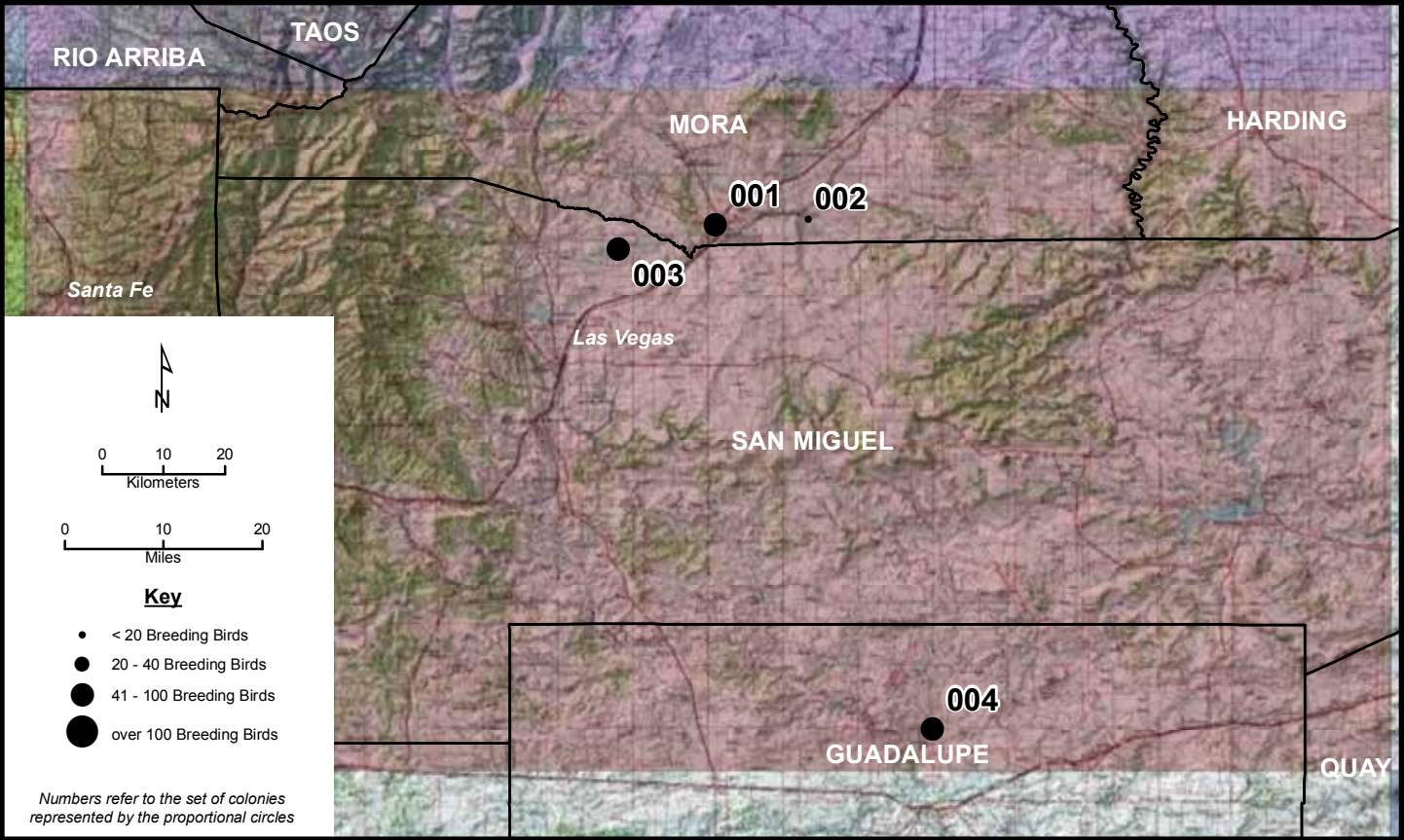
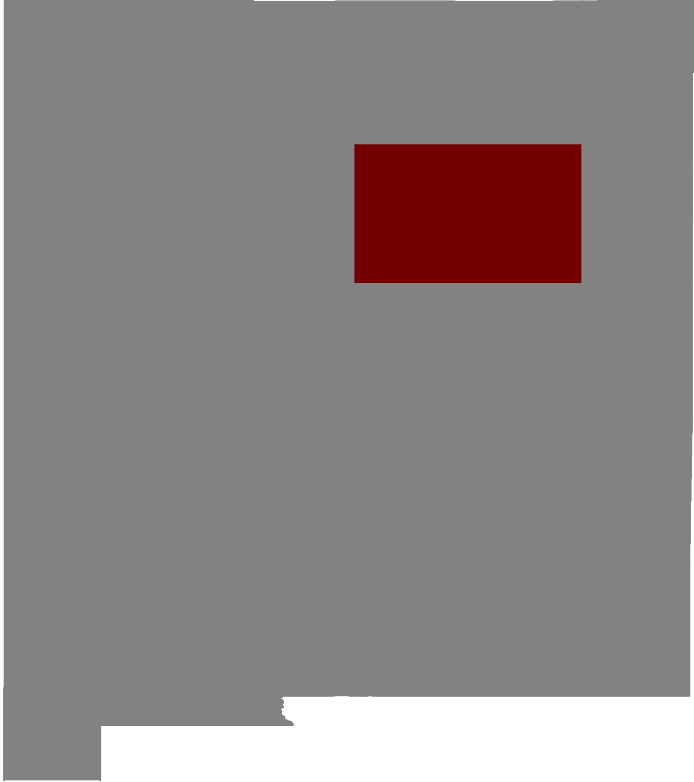
Area Map: 36104a1 (Raton)  
 Site Number: 001  
 BCR 16

Colony Number: 36104a1-001  
 Colfax County, NM

Stubblefield Lake  
 13N 530811 4048340  
 (WGS84)

Species	# of Nests	Est. # of Breeding Birds	Actual Bird Count	W	Cnv	Date	ST	T	Observers
Western or Clark's Grebe	44	88		N	2	8/10/2010	O	W	Watson
Western Grebe		7	7	B	L	9/22/2010	O	W	Howe
Clark's Grebe		12	12	B	L	9/22/2010	O	W	Howe
Eared Grebe	8	16		N	2	7/7/2007	U	U	Cleary
Eared Grebe	18	36		N	2	8/7/2006	U	U	Cleary
Eared Grebe		12	12	P		8/8/2005	U	U	Cleary
Eared Grebe	24	48		N	2	7/24/2004	U	U	Cleary
Western Grebe	5	10		N	2	7/13/2007	U	U	Cleary
Western Grebe	2	4		N	2	7/13/2006	U	U	Cleary
Western Grebe				B		6/9/2005	U	X	Cleary
Western Grebe	1	2		N	2	7/6/2004	U	U	Cleary
Clark's Grebe	6	12		N	2	7/13/2007	U	U	Cleary
Clark's Grebe	2	4		N	2	7/13/2006	U	U	Cleary
Clark's Grebe				B		6/9/2005	U	X	Cleary
Clark's Grebe	4	8		N	2	7/23/2004	U	U	Cleary
Clark's Grebe	20	40		N	2	7/16/2000	U	U	Rustay
Clark's Grebe		4	4	B	L	8/6/1986	U	U	Steel
White-faced Ibis	3	6		N	2	7/16:24/2007	U	U	Cleary





**Santa Fe 001-003**

**Area Map: 35104a1 (Santa Fe)**  
**Site Number: 001**  
**BCR 18**

**Colony Number: 35104a1-002**  
**Mora County, NM**

**Watrous**  
**13N 500978 3962103**  
**(WGS84)**

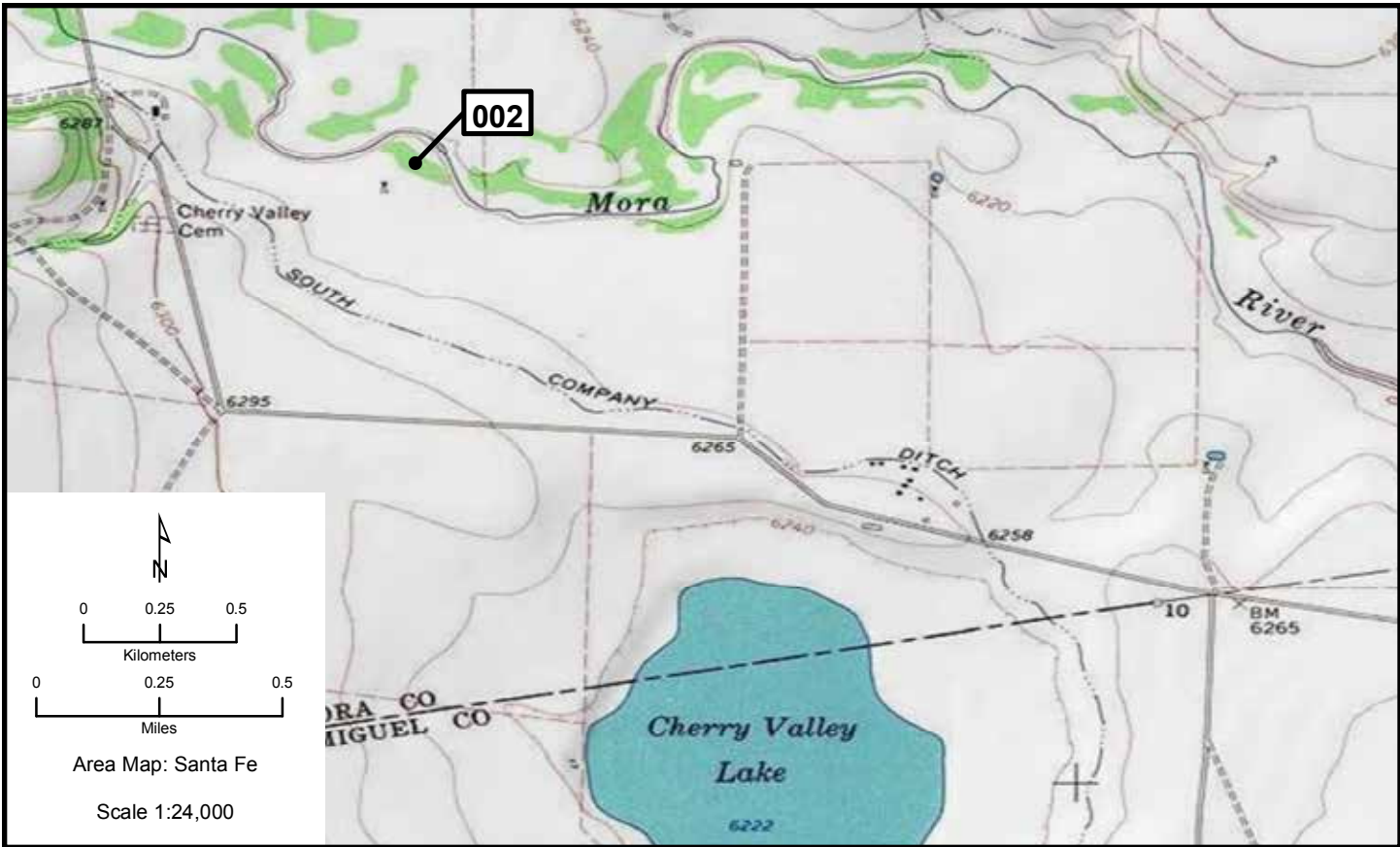
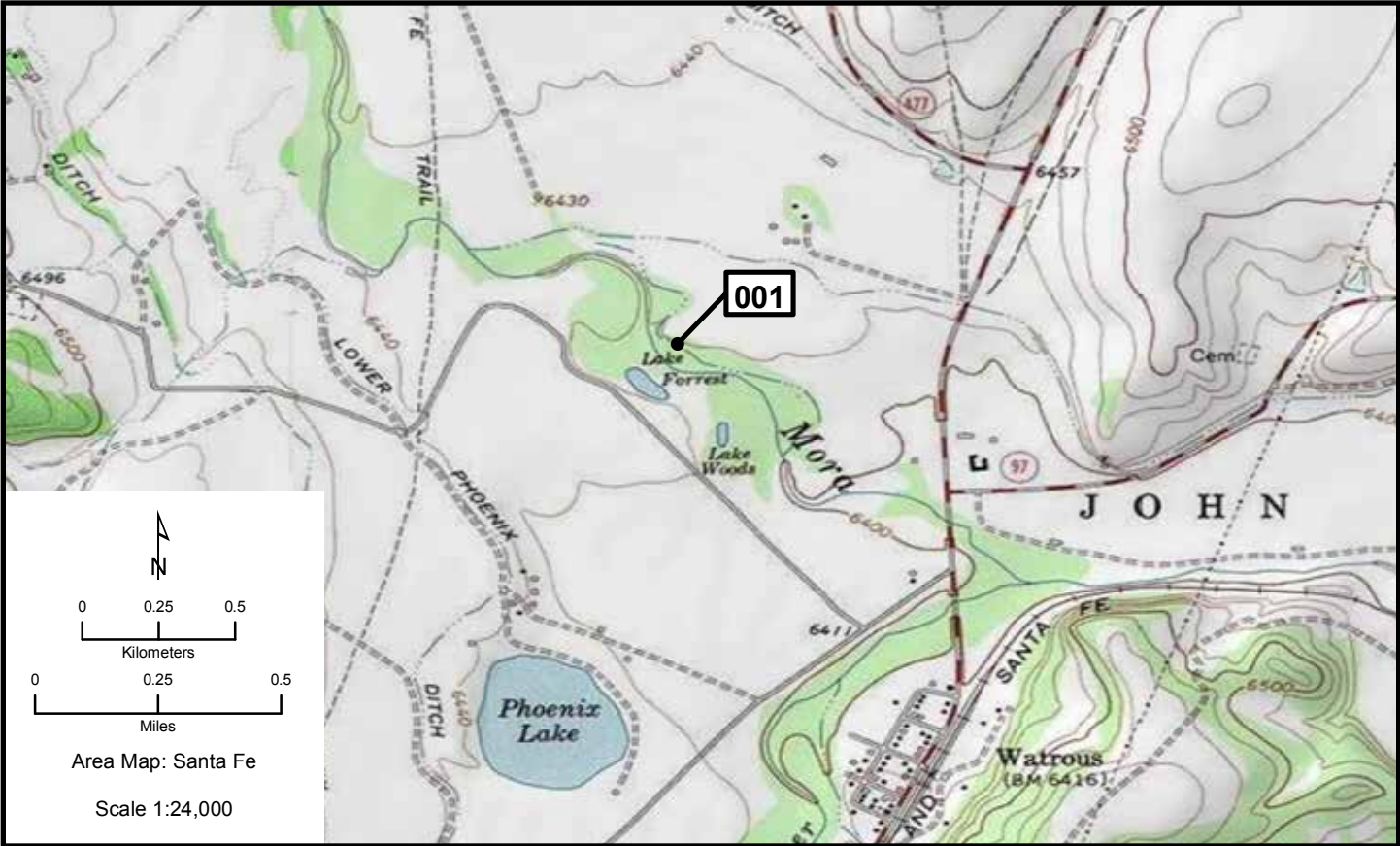
Species	# of Nests	Est. # of Breeding Birds	Actual Bird		W	Cnv	Date	ST	T	Observers
			Count							
Double-crested Cormorant	10	20	11	N	2	4/5/2011	O	W	Howe	
Great Blue Heron		9	9	B	L	4/5/2011	O	W	Howe	
Great Blue Heron	10	20		N	2	5/26/2010	A	Z	Watson	
Great Blue Heron	16	32		N	2	6/1/2008	U	U	Stahlecker	
Great Blue Heron	2	4		N	2	7/9/2007	U	U	Stahlecker	
Great Blue Heron	20	40		N	2	4/1/2004	U	U	Stahlecker	
Great Blue Heron	1	2	2	N	2	6/18/1978	U	U	Hawk	
Great Blue Heron	15	30		N	2	Spring 1975	U	U	Hawk	
Great Blue Heron				N		Summer 1974	U	X	Hawk	
Great Blue Heron				N		Summer 1972	U	X	Hawk	
Great Blue Heron				N		Summer 1971	U	X	Hawk	
Great Blue Heron				N		Summer 1970	U	X	Hawk	
Great Blue Heron	20	40		N	2	4/20/1969	U	U	Schooley	
Great Blue Heron	18	36		N	2	4/27/1968	U	U	Hawk	

**Area Map: 35104a1 (Santa Fe)**  
**Site Number: 002**  
**BCR 18**

**Colony Number: 35104a1-001**  
**Mora County, NM**

**Cherry Valley Lake**  
**13N 513251 3962877**  
**(WGS84)**

Species	# of Nests	Est. # of Breeding Birds	Actual Bird		W	Cnv	Date	ST	T	Observers
			Count							
Great Blue Heron	5	10	6	N	2	4/5/2011	O	W	Howe	



# Santa Fe 003, 004

Area Map: 35104a1 (Santa Fe)  
 Site Number: 003  
 BCR 18

Colony Number: 35104a1-003  
 San Miguel County, NM

Ruby Ranch: Lake David  
 13N 488095 3958029  
 (WGS84)

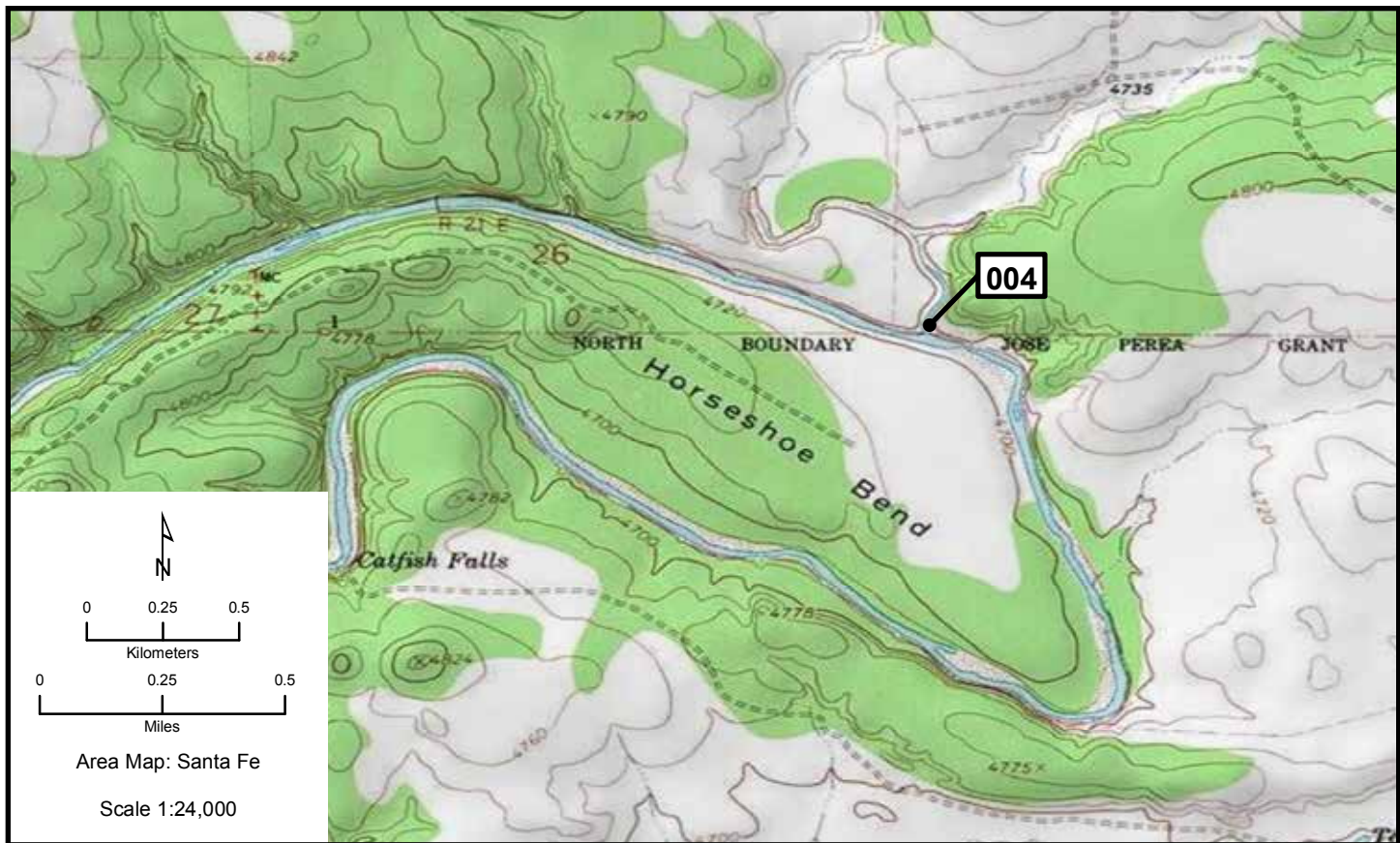
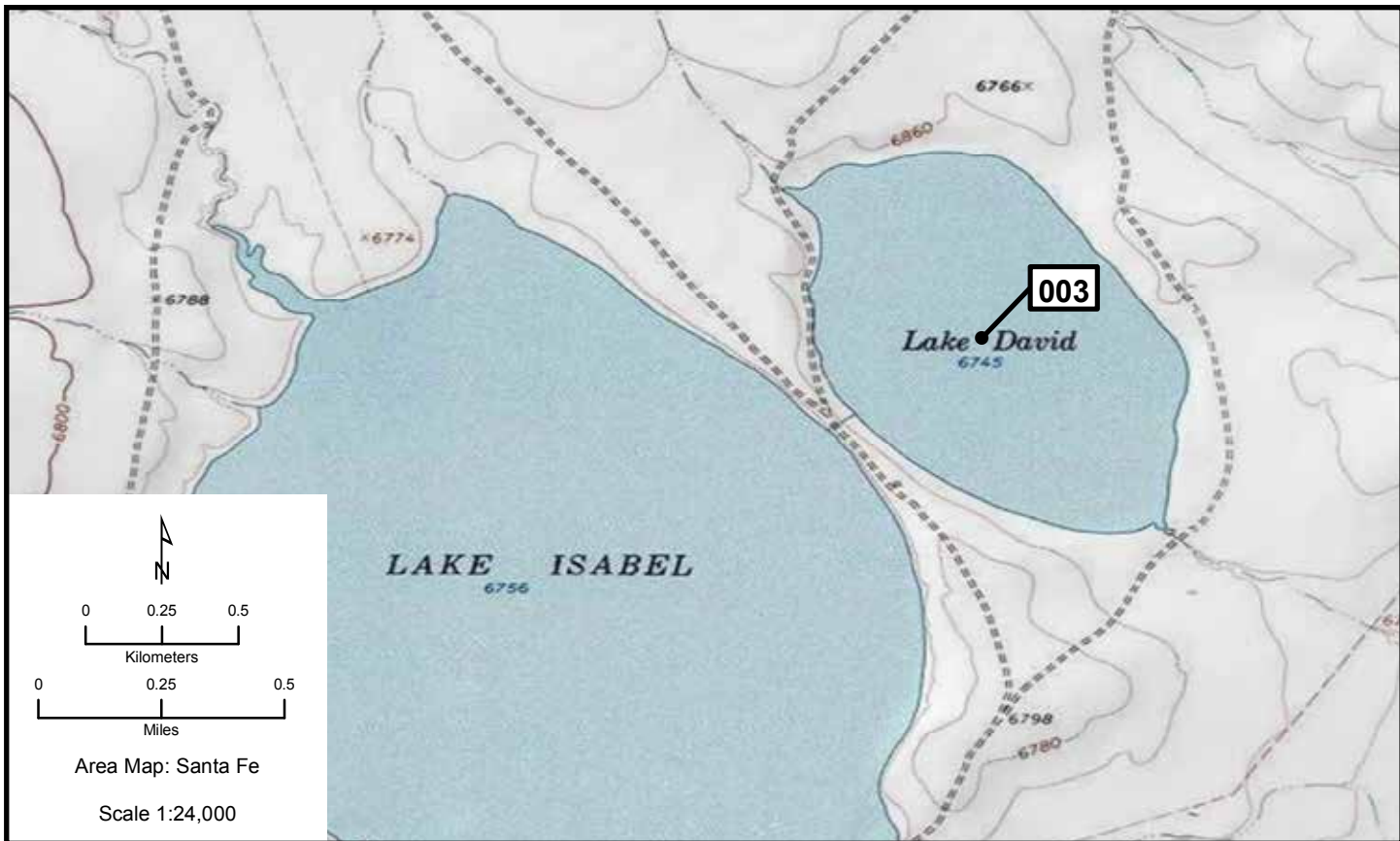
Species	# of Nests	Est. # of Breeding Birds	Actual Bird Count	W	Cnv	Date	ST	T	Observers
Clark's Grebe	22	44		N	2	8/-/2009	O	W	West

Area Map: 35104a1 (Santa Fe)  
 Site Number: 004  
 BCR 16

Colony Number: 35104a1-004  
 Guadalupe County, NM

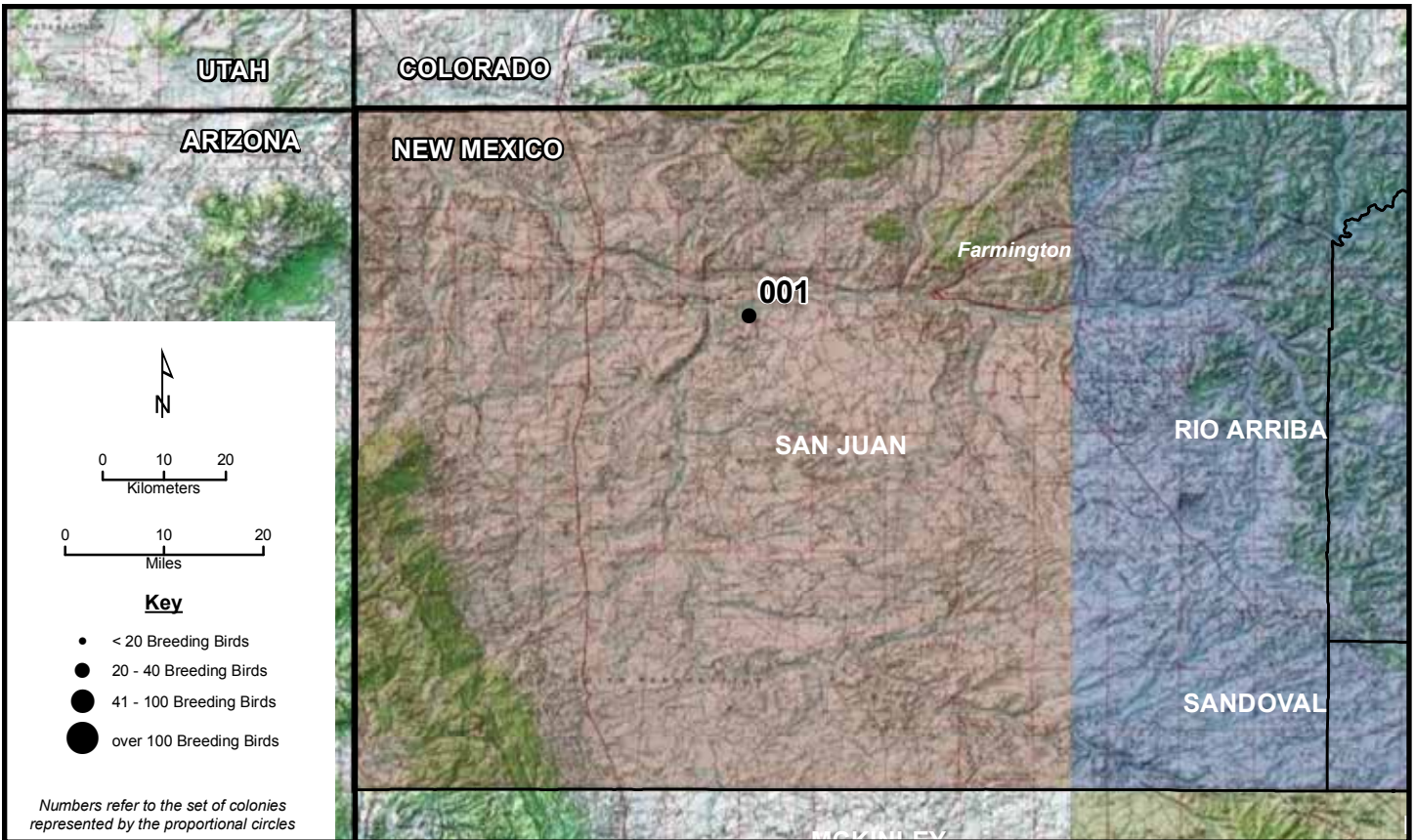
Santa Rosa Reservoir  
 13N 529996 3880076  
 (WGS84)

Species	# of Nests	Est. # of Breeding Birds	Actual Bird Count	W	Cnv	Date	ST	T	Observers
Double-crested Cormorant	39	78		N	2	5/31/2010	B	W	Howe
Double-crested Cormorant	46	92		N	2	6/10/2009	B	W	Mumford
Double-crested Cormorant	30	80	80	B	L	4/25/1995	U	U	Stahlecker
Double-crested Cormorant				N		5/23/1994	U	X	Stahlecker
Double-crested Cormorant	24	48		N	2	6/12/1991	U	U	Williams
Double-crested Cormorant				N		Spring 1985	U	X	Hayes





# Shiprock



Area Map: 36108a1 (Shiprock)  
 Site Number: 001  
 BCR 16

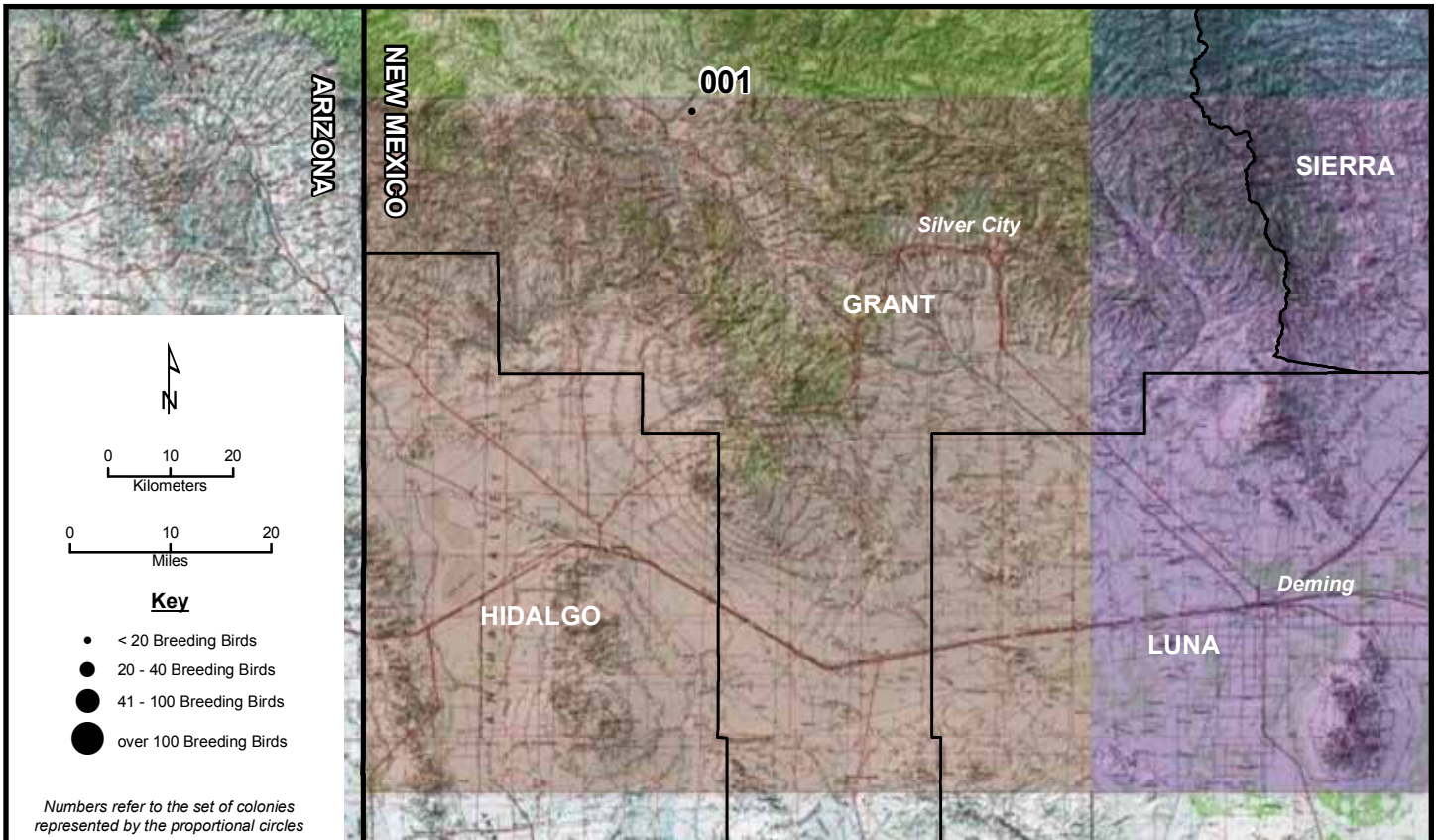
Colony Number: 36108a1-001  
 San Juan County, NM

Morgan Lake  
 12N 725959 4063984  
 (WGS84)

Species	# of Nests	Est. # of Breeding Birds	Actual Bird Count	W	Cnv	Date	ST	T	Observers
Great Blue Heron	1	2	2	N	2	6/21/2011	O	W	Reeves
Great Blue Heron	5	10		N	2	5/25/2010	A	W	Watson
Great Blue Heron	11	22		N	2	Summer 2009	O	W	Reeves
Western or Clark's Grebe		147	147	B	L	6/24/2006	U	U	Nelson
Great Blue Heron	6	12		N	2	6/-/2009	U	U	Reeves
Great Blue Heron	7	14		N	2	5/-/2008	U	U	Reeves
Great Blue Heron	1	2		N	2	5/11/2007	U	U	Reeves
Great Blue Heron	2	4		N	2	4/22/2005	U	U	Nelson
Great Blue Heron	4	8		N	2	4/30/2004	U	U	Nelson
Black-crowned Night-Heron	3	6		N	2	4/8/1997	U	U	Reeves
Black-crowned Night-Heron		12	12	B	L	5/3/1995	U	U	Reeves



# Silver City

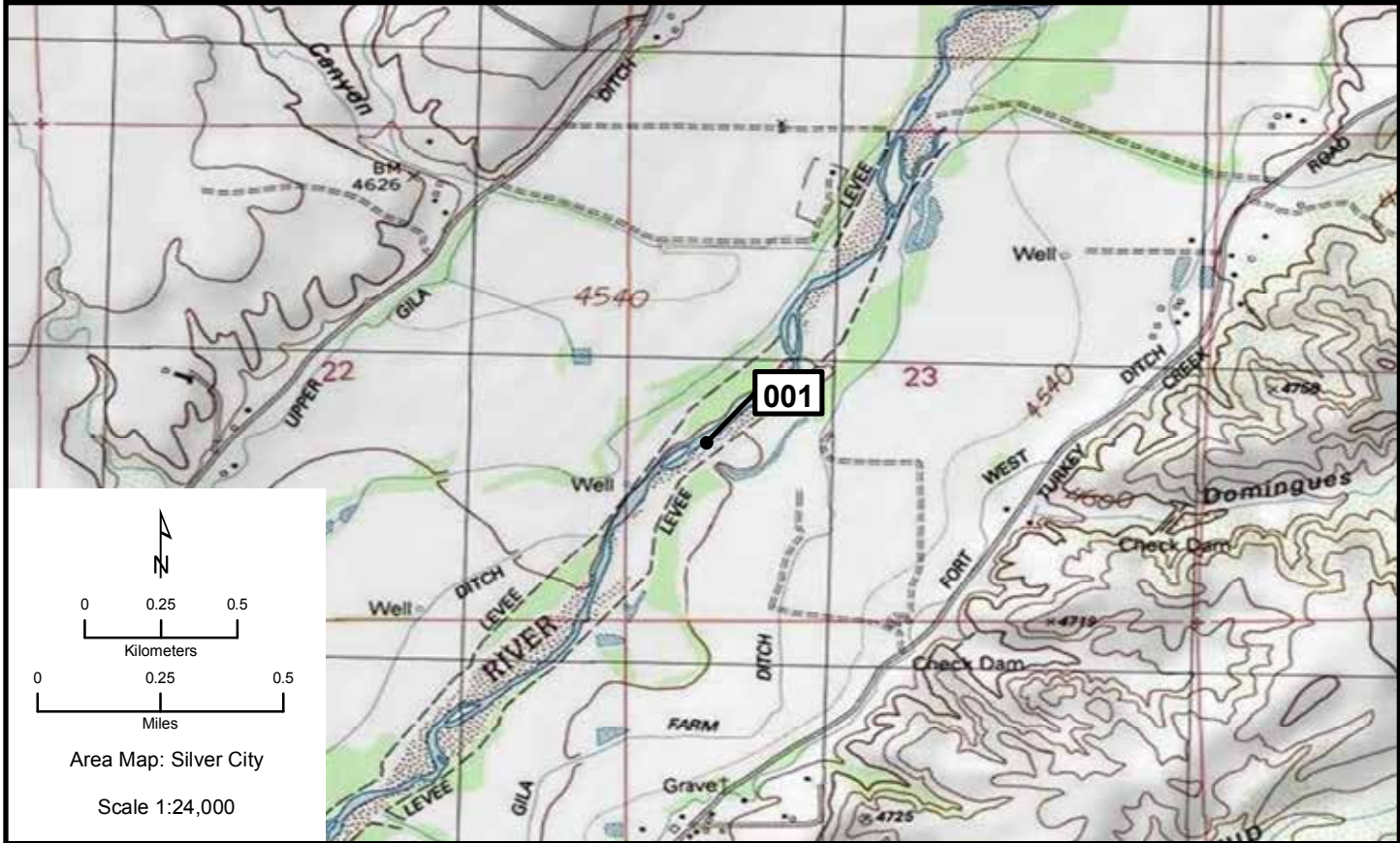


Area Map: 32108a1 (Silver City)  
 Site Number: 001  
 BCR 34

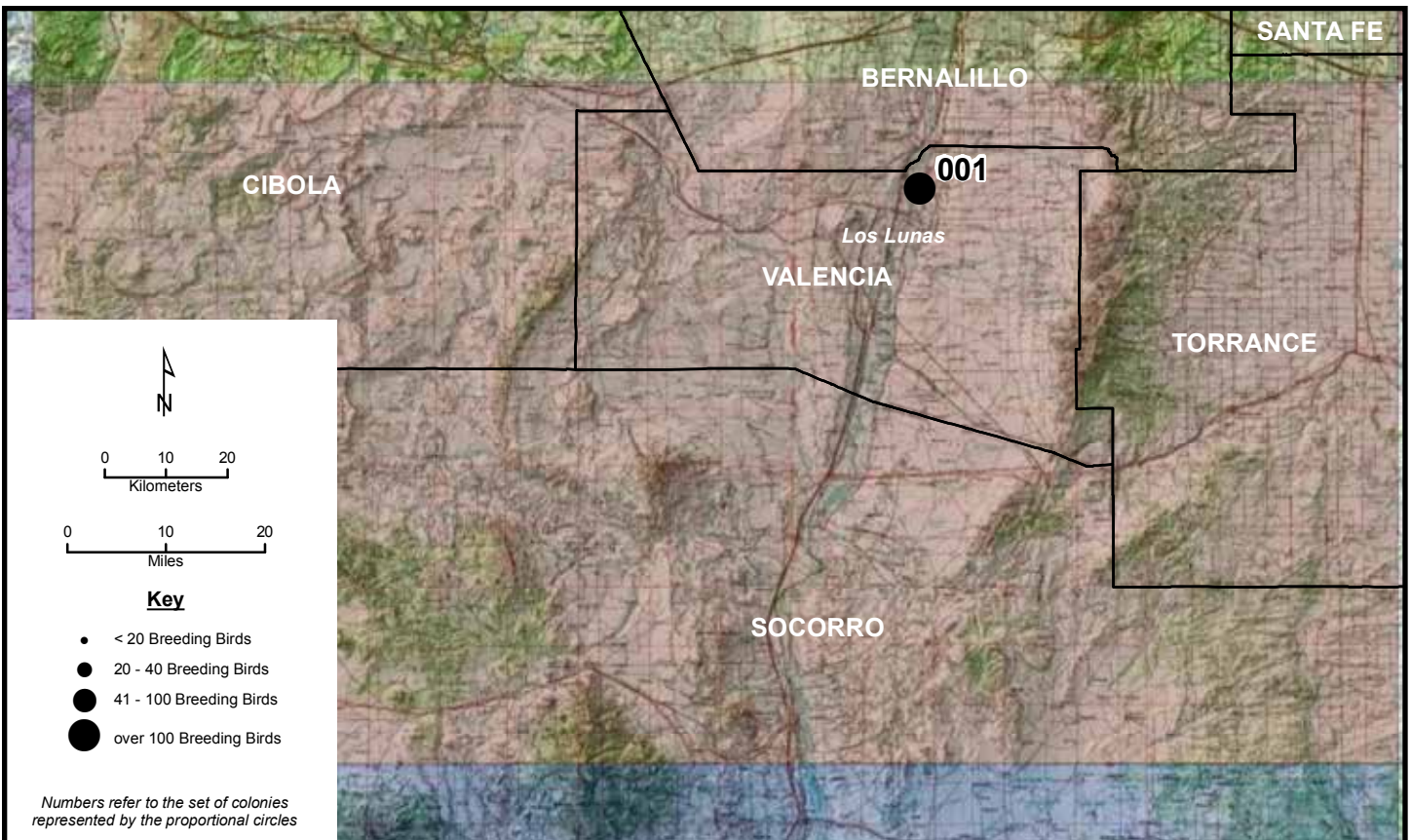
Colony Number: 32108a1-001  
 Grant County, NM

Gila  
 12N 726600 3651919  
 (NAD27)

Species	# of Nests	Est. # of Breeding Birds	Actual Bird Count	W	Cnv	Date	ST	T	Observers
Great Blue Heron	9	18	8	N	2	3/4/2011	O	W	Walkup



Socorro

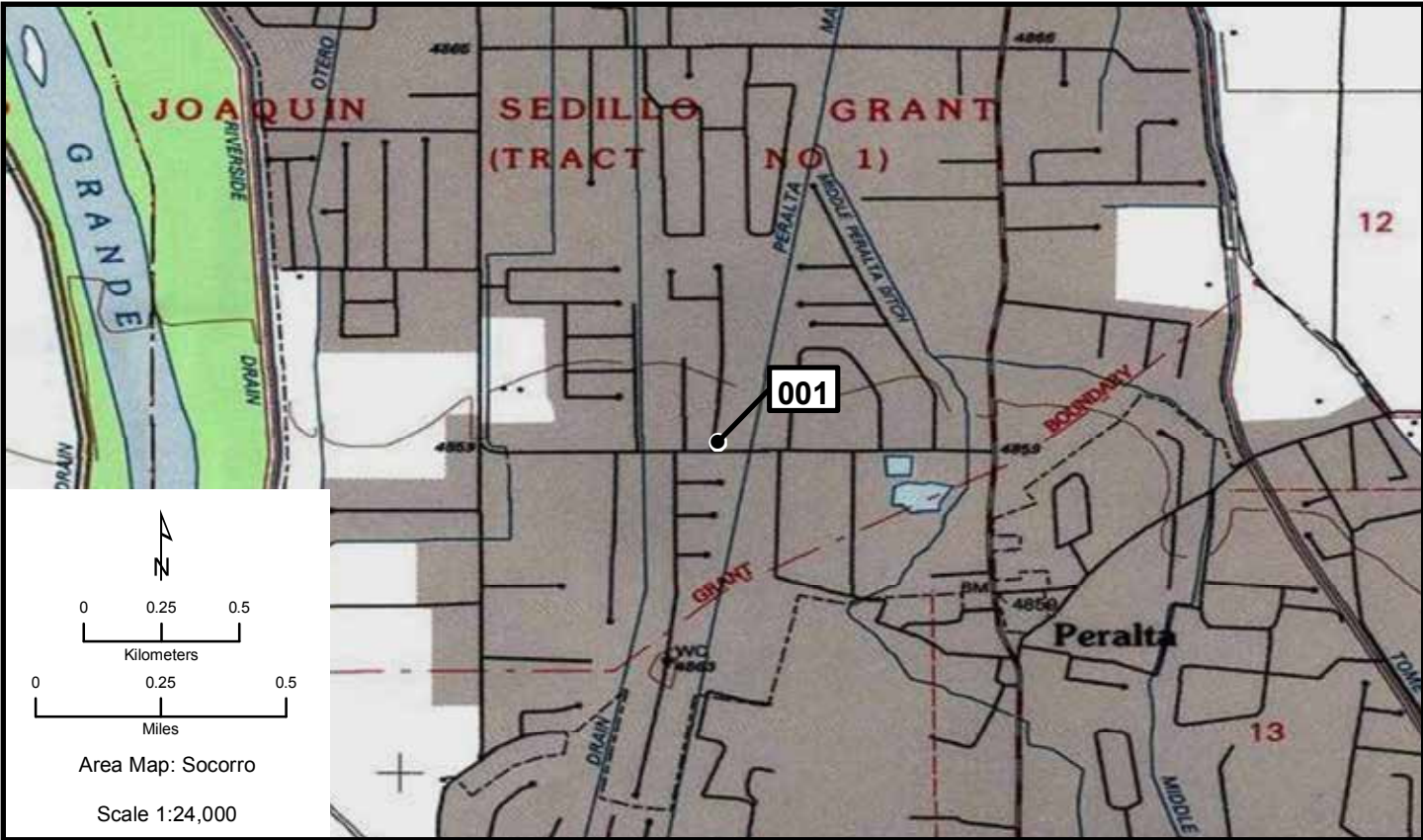


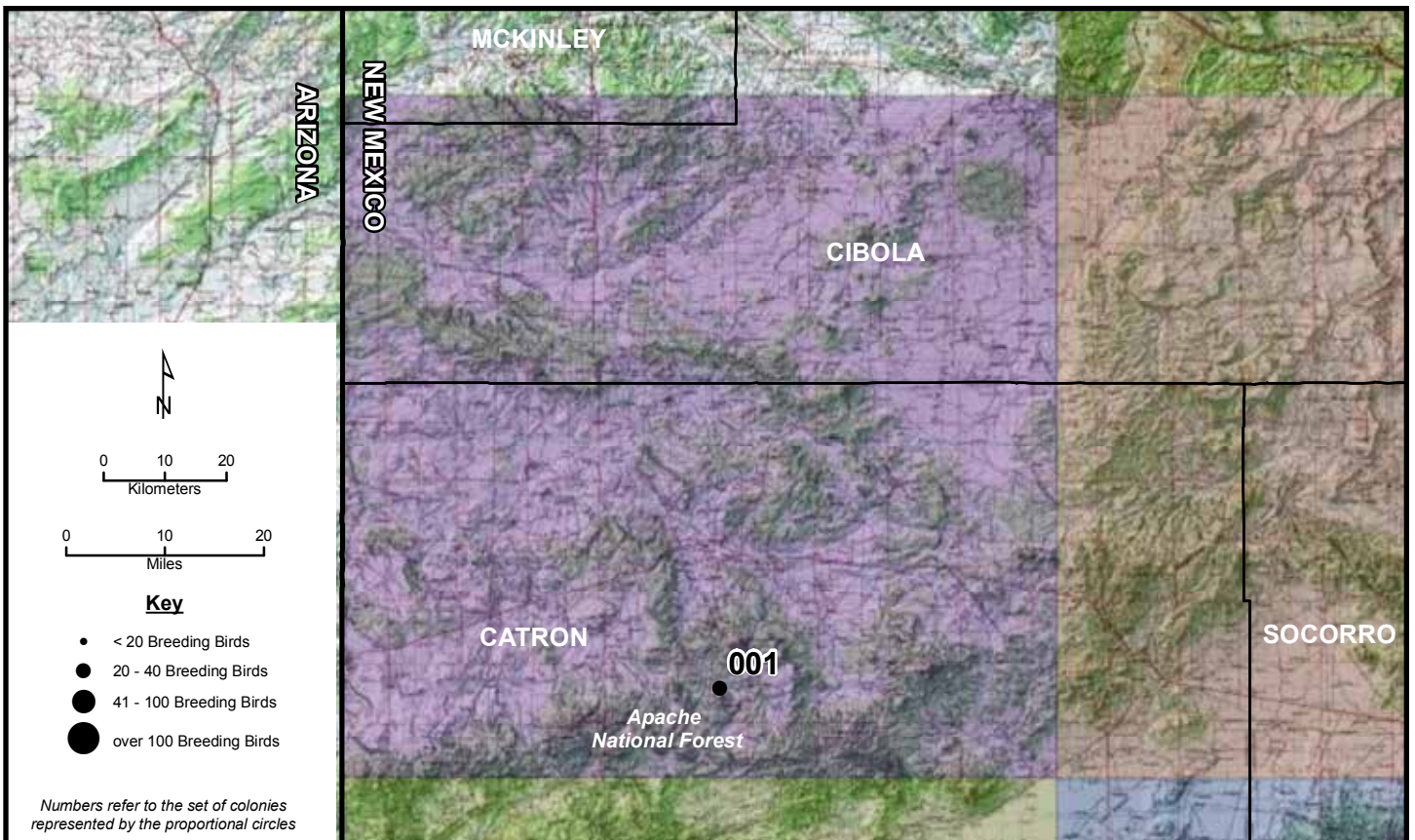
Area Map: 34106a1 (Socorro)  
 Site Number: 001  
 BCR 16

Colony Number: 34106a1-001  
 Valencia County, NM

Bosque Farms: S. Bosque Loop  
 13N 344588 3856944  
 (WGS84)

Species	# of Nests	Est. # of Breeding Birds	Actual Bird Count	W	Cnv	Date	ST	T	Observers
Snowy Egret	13	26	16	N	2	6/10/2010	C	Y	Liddell
Cattle Egret	25	50	34	N	2	6/10/2010	C	Y	Liddell
Black-crowned Night-Heron	13	26	13	N	2	6/10/2010	C	Y	Liddell
Snowy Egret				N		6/-/1998	U	X	Howe
Snowy Egret	25	50		N	2	6/-/1997	U	U	Howe
Black-crowned Night-Heron				N		6/-/1998	U	X	Howe
Black-crowned Night-Heron	75	150		N	2	6/-/1997	U	U	Howe



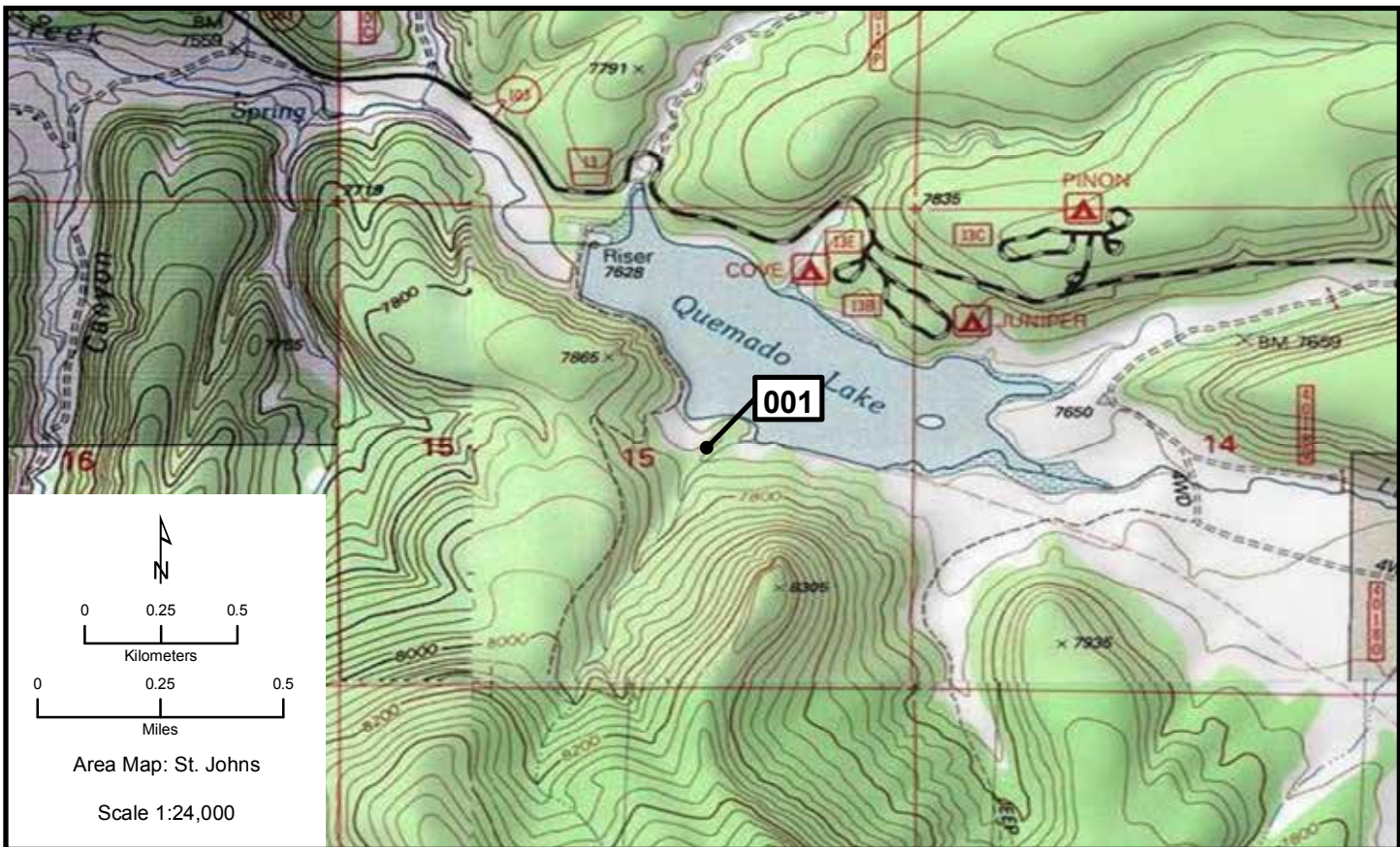


Area Map: 34108a1 (St. Johns)  
 Site Number: 001  
 BCR 34

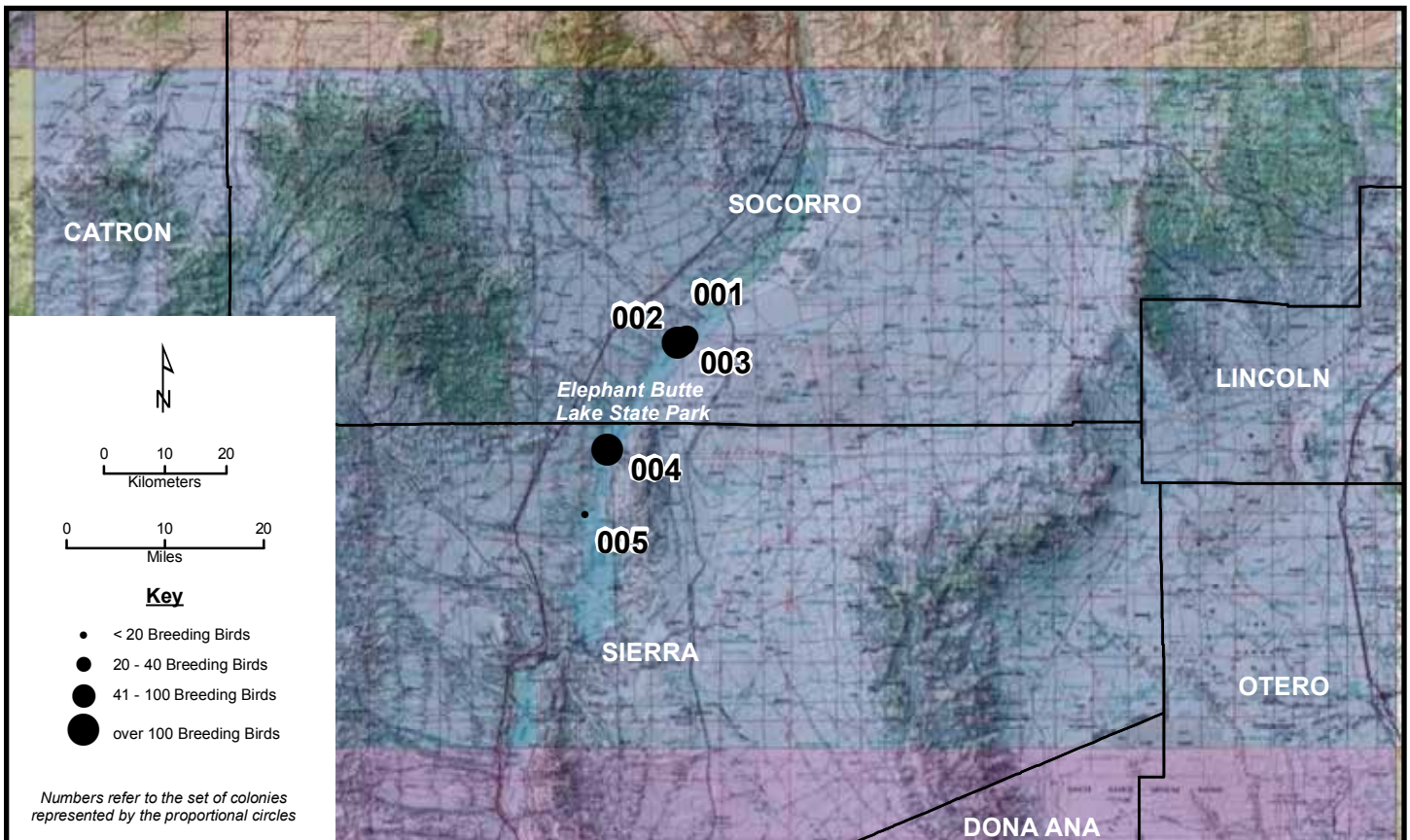
Colony Number: 34108a1-001  
 Catron County, NM

Quemado Lake  
 12N 731121 3779619  
 (NAD83)

Species	# of Nests	Est. # of Breeding Birds	Actual Bird Count	W	Cnv	Date	ST	T	Observers
Great Blue Heron	13	26		N	2	5/20/2010	O	W	Williams III
Great Blue Heron	10	20		N	2	6/4/2009	U	U	Walker
Great Blue Heron	3	6		N	2	5/27:28/2005	U	U	Williams
Great Blue Heron	3	6		N	2	4/23/2004	U	U	Stahlecker







Area Map: 33106a1 (Tularosa)  
 Site Number: 001  
 BCR 35

Colony Number: 33106a1-001  
 Socorro County, NM

Quates Lake: Upper Marsh  
 13N 310632 3720480  
 (WGS84)

Species	# of Nests	Est. # of Breeding Birds	Actual Bird Count	W	Cnv	Date	ST	T	Observers
Double-crested or Neotropic Cormorant	30	60		N	2	5/19/2010	A	Z	Watson
Double-crested Cormorant	2	4		N	2	6/20/2010	O	W	Murphy
Great Blue Heron	13	26		N	2	6/20/2010	O	W	Murphy

Area Map: 33106a1 (Tularosa)  
 Site Number: 002  
 BCR 35

Colony Number: 33106a1-002  
 Socorro County, NM

Quates Lake: Middle Marsh  
 13N 310251 3719479  
 (WGS84)

Species	# of Nests	Est. # of Breeding Birds	Actual Bird Count	W	Cnv	Date	ST	T	Observers
Double-crested or Neotropic Cormorant	8	16		N	2	6/20/2010	O	W	Murphy
Great Egret	35	70		N	2	6/20/2010	O	W	Murphy
Snowy Egret	3	6		N	2	6/20/2010	O	W	Murphy
Double-crested or Neotropic Cormorant	100	200		N	2	6/10/1999	U	U	Williams/White
Double-crested or Neotropic Cormorant	53	106		N	2	5/28/1998	U	U	Howe/White
Double-crested Cormorant	14	28		N	2	5/9/2007	U	U	Doster
Double-crested Cormorant	12	24		N	2	5/2/2006	U	U	Doster
Double-crested Cormorant				N		5/23/1989	U	X	Hubbard
Neotropic Cormorant	4	8		N	2	6/13/2007	U	U	Doster
Neotropic Cormorant	30	60		N	2	5/28/1998	U	U	Howe/White
Great Blue Heron	5	10		N	2	5/5/2009	U	U	Doster
Great Blue Heron	3	6		N	2	7/23/2008	U	U	Cleary
Great Blue Heron	15	30		N	2	6/13/2007	U	U	Doster/Stahlecker
Great Blue Heron				N		5/2/2006	U	X	Doster
Great Blue Heron	2	4		N	2	6/10/1999	U	U	Williams/White
Great Blue Heron	26	52		N	2	5/28/1998	U	U	Howe/White
Great Egret	55	110		N	2	5/5/2009	U	U	Doster
Great Egret	34	68		N	2	6/13/2007	U	U	Doster/Stahlecker
Great Egret	10	20		N	2	6/10/1999	U	U	Williams/ White
Snowy Egret	4	8		N	2	5/5/2009	U	U	Doster
Snowy Egret	190	380		N	2	6/10/1999	U	U	Williams/White
Snowy Egret	51	102		N	2	5/28/1998	U	U	Howe/White
Black-crowned Night-Heron	32	64		N	2	5/5/2009	U	U	Doster
Black-crowned Night-Heron	17	34		N	2	6/13/2007	U	U	Doster/Stahlecker
Black-crowned Night-Heron	25	50		N	2	6/10/1999	U	U	Williams/White
Black-crowned Night-Heron	50	100		N	2	5/28/1998	U	U	Howe/White

# Tularosa 003, 004

Area Map: 33106a1 (Tularosa)  
 Site Number: 003  
 BCR 35

Colony Number: 33106a1-003  
 Socorro County, NM

Cuates Lake: Lower Marsh  
 13N 309391 3719169  
 (WGS84)

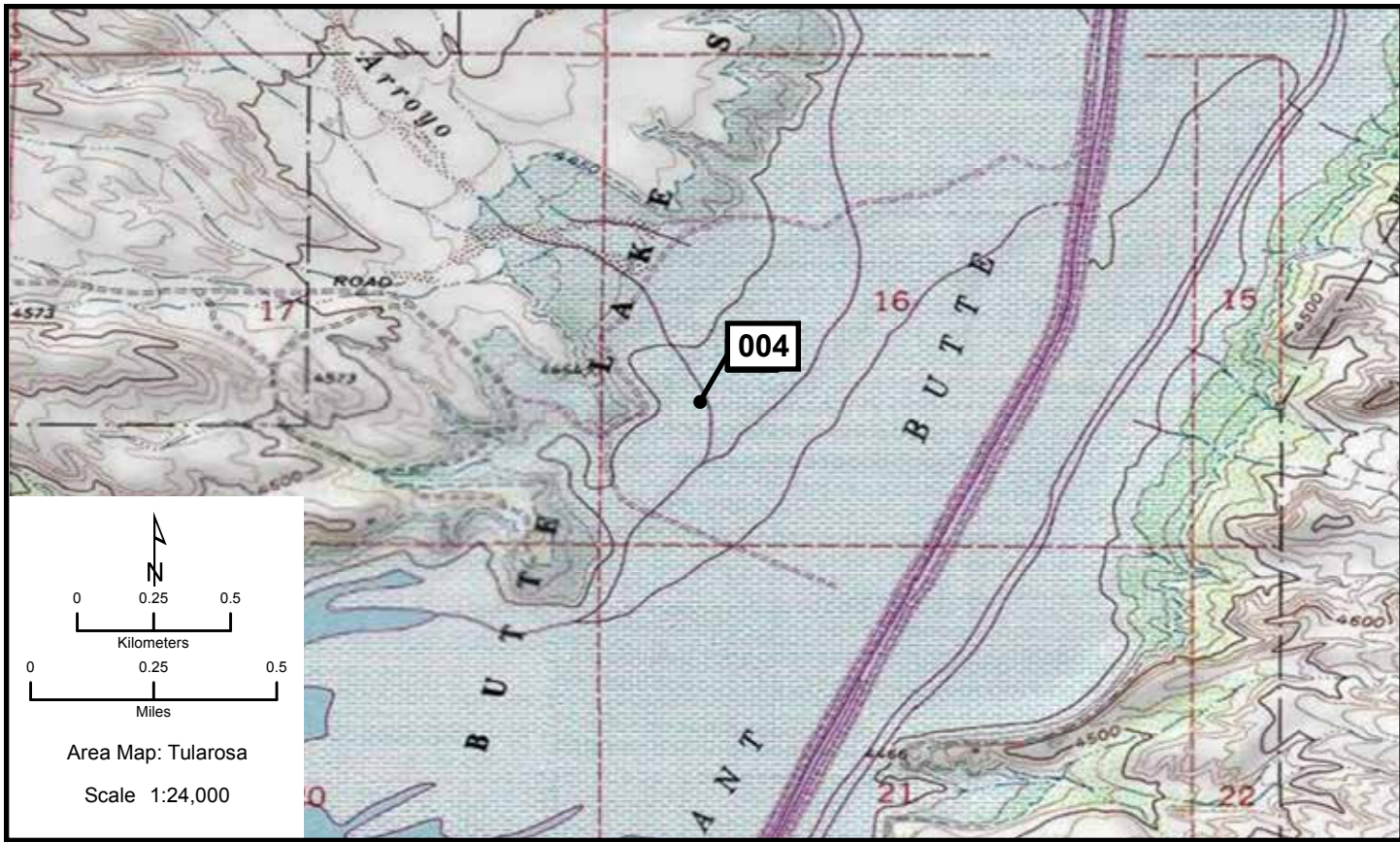
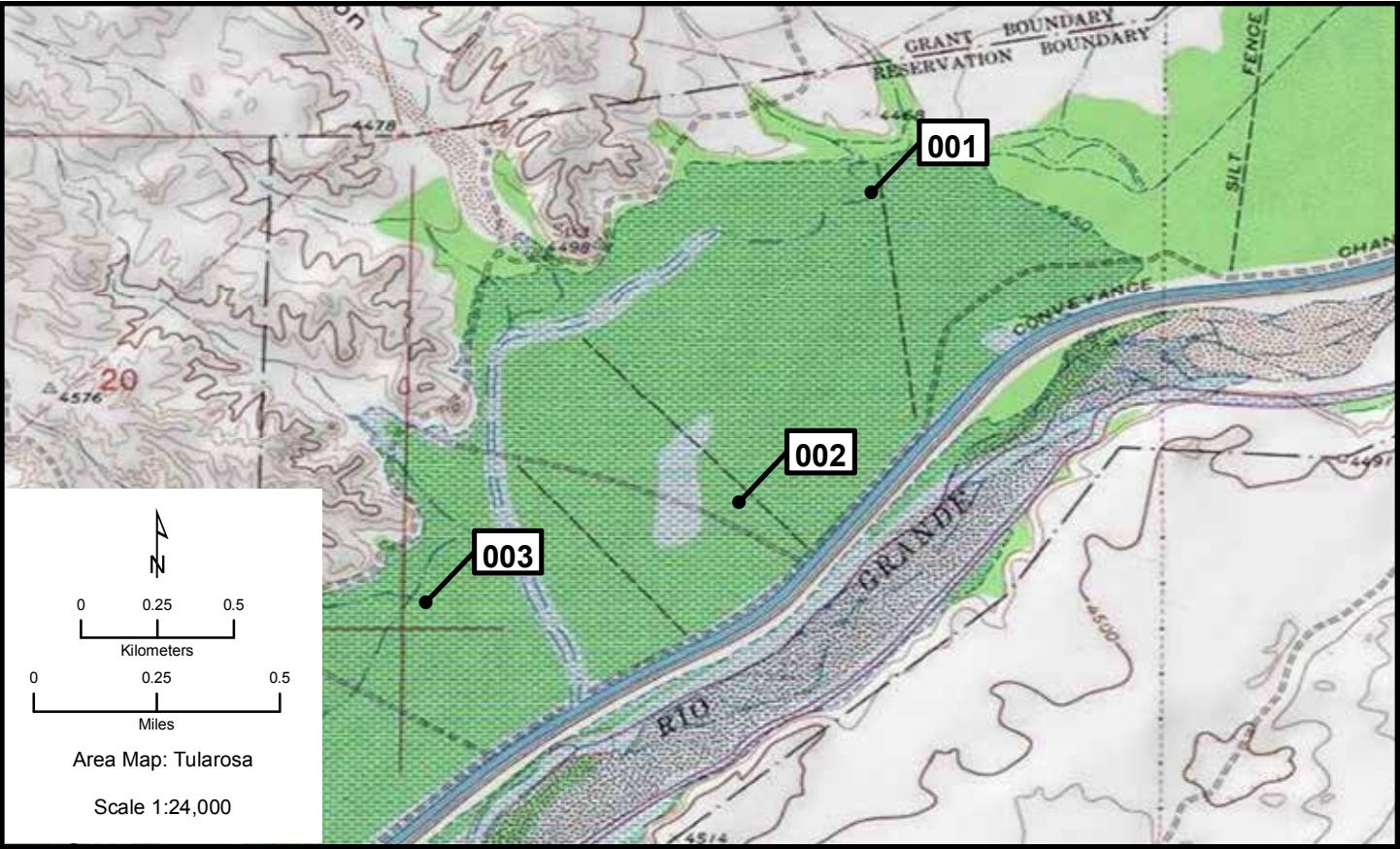
Species	# of Nests	Est. # of Breeding Birds	Actual Bird Count	W	Cnv	Date	ST	T	Observers
Double-crested or Neotropic Cormorant	10	20		N	2	5/19/2010	A	W	Watson
Great Blue Heron	1	2		N	2	6/20/2010	O	W	Murphy
Snowy Egret	53	106		N	2	6/20/2010	O	W	Murphy
Black-crowned Night-Heron	20	40		N	2	6/20/2010	O	W	Murphy

Area Map: 33106a1 (Tularosa)  
 Site Number: 004  
 BCR 35

Colony Number: 33106a1-004  
 Sierra County, NM

Elephant Butte: Indian Springs  
 13N 299491 3702000  
 (WGS84)

Species	# of Nests	Est. # of Breeding Birds	Actual Bird Count	W	Cnv	Date	ST	T	Observers
Double-crested Cormorant	5	10		N	2	6/20/2010	O	W	Murphy
Great Blue Heron	8	16		N	2	6/20/2010	O	W	Murphy
Great Egret	15	30		N	2	6/20/2010	O	W	Murphy
Snowy Egret	40	80		N	2	6/20/2010	O	W	Murphy
Cattle Egret	15	30		N	2	6/20/2010	O	W	Murphy
Black-crowned Night-Heron	10	20		N	2	6/20/2010	O	W	Murphy



# Tularosa 005

Area Map: 33106a1 (Tularosa)  
Site Number: 005  
BCR 35

Colony Number: 33106a1-005  
Sierra County, NM

Elephant Butte: Pinosa Canyon  
13N 296194 3691721  
(WGS84)

Species	# of Nests	Est. # of Breeding Birds	Actual Bird Count	W	Cnv	Date	ST	T	Observers
Double-crested or Neotropic Cormorant	3	6		N	2	5/19/2010	A	W	Watson

