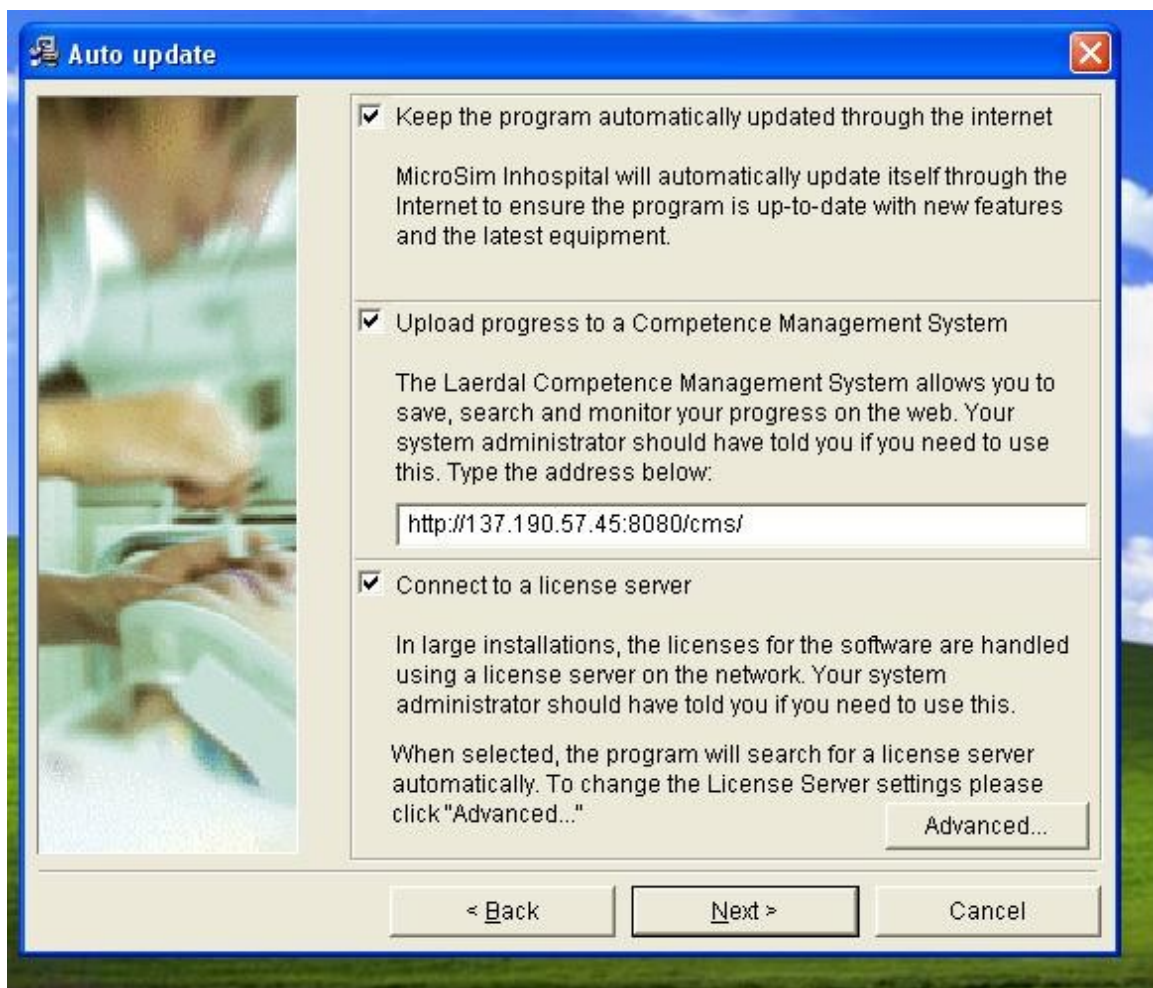


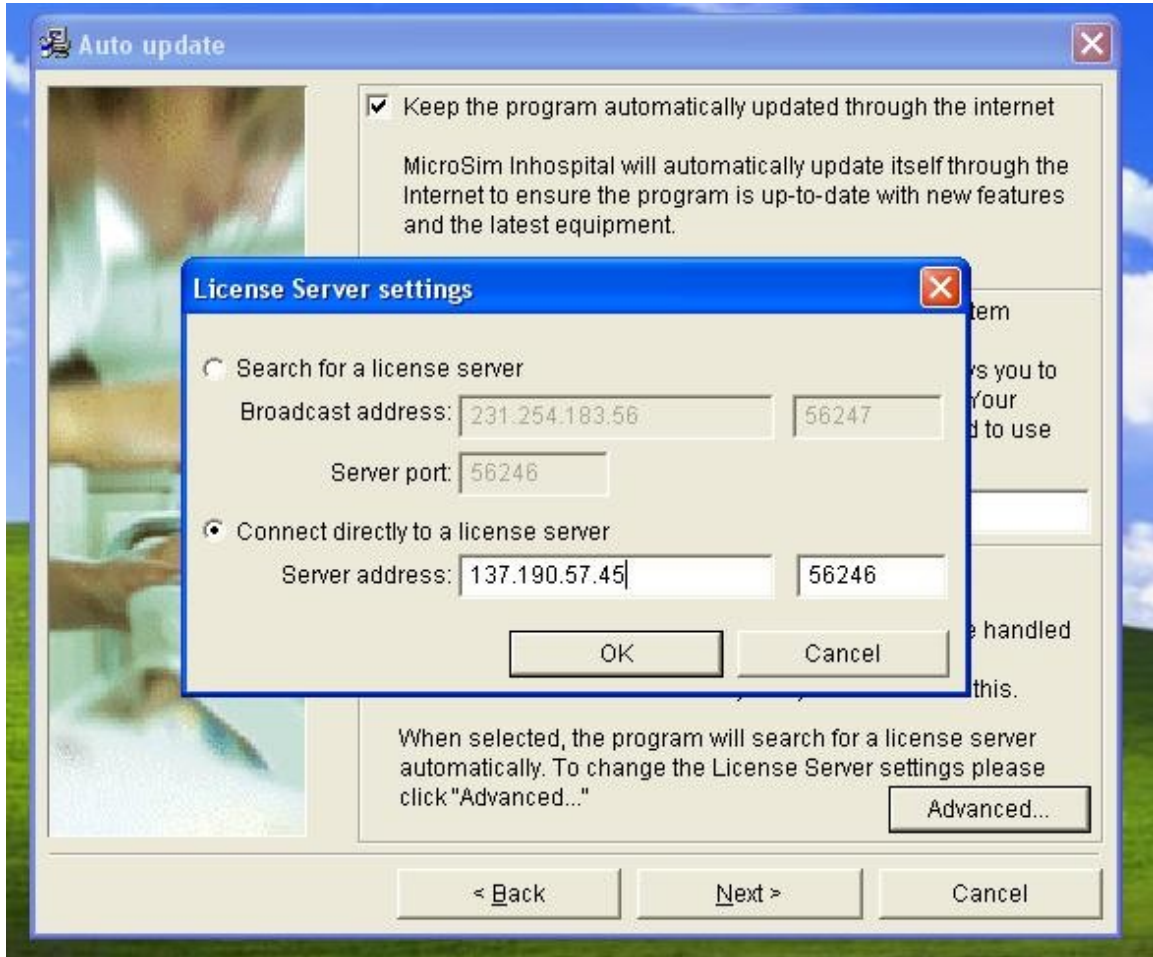
Installation Instructions for MicroSim Inhospital

1. Insert CD into computer and wait for setup to start. (note: may take a few minutes to appear.)
2. Select English, and click OK.
3. Select Next.
4. Select Agree.
5. Check English US, and Select Next.
6. Select Next.
7. Check the box next to “Upload progress to a Competence Management System” and the box next to “Connect to a license server.”
8. Inside the white box in the “Upload progress” section, replace the address with the following: `http://137.190.57.45:8080/cms/`



9. Click the Advanced button in the “Connect to a license server” section.
10. Click the button next to “Connect directly to a license server”

11. Replace the server address with the following: 137.190.57.45 and leave the following box as 56246.



12. Select OK.
13. Select Next.
14. Select Next and wait for installation to complete.
15. Select Finish to start MicroSim Inhospital.
16. Enter you login and password, and Select OK.
17. If you have trouble connecting, double check your login and password with Allen Lore. If those are both correct try the following steps:
18. In the system tray, right click on Laerdal Update Agent, and select settings.



19. Confirm that your connection settings are the same as the picture.

